

Sue Pattinson

UHCC PC49 Variation 1 - Silverstream Spur

Reconvened Hearing as per Independent Hearing Panel's Minute 9

About Sue Pattinson

27 Elmslie Road

Pinehaven

Upper Hutt

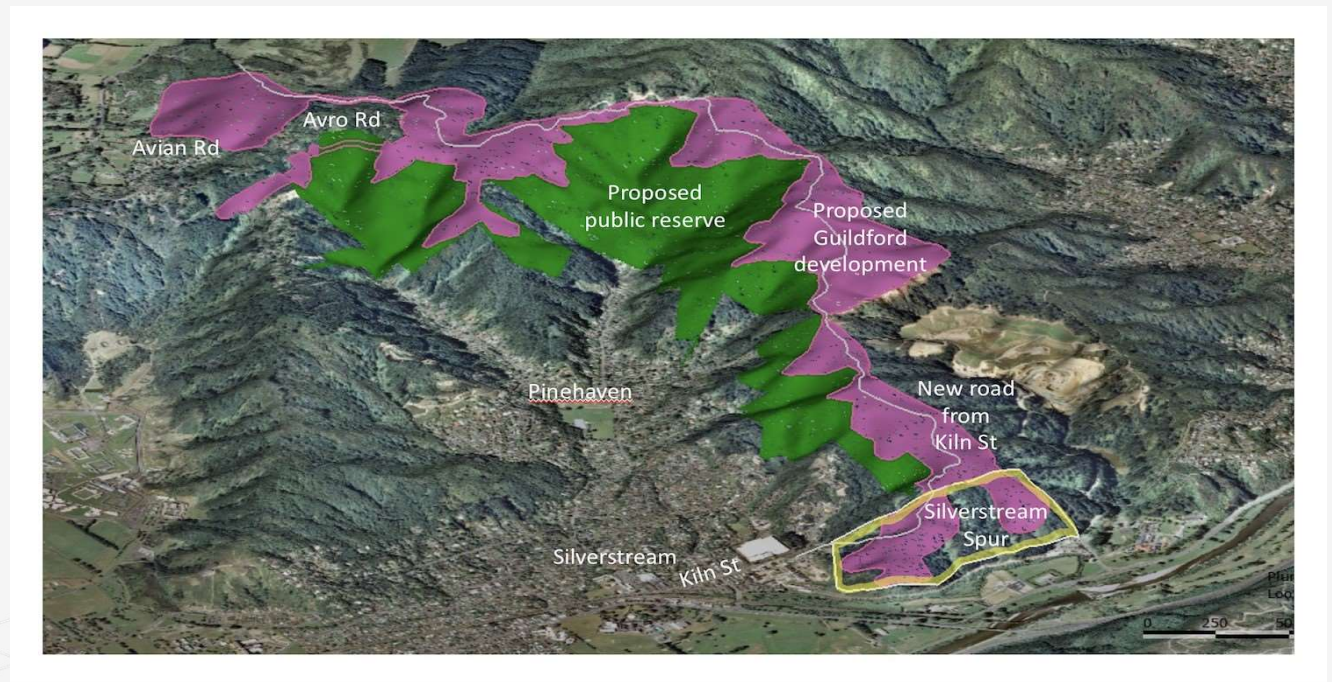
Quote (2-12-2020) from flood experts R J Hall & Associates Ltd:

If the [Pinehaven] hydrology is not fixed it will result in deleterious effects from future urban development on the presently well-vegetated stable ridges and upper slopes within this catchment. ...

Typically stream beds incise and channel widths increase and ... lateral bank erosion becomes more pronounced. If these effects were to arise in the Pinehaven Stream's upper reaches then both the erosion products and riparian vegetation destabilized by the lateral bank erosion will tend to accumulate in the upper reaches and be periodically swept out in subsequent rainstorms. These processes have the potential to destabilise slopes and result in an increase in the propensity for landslides.

Ecological Wellbeing Beyond Silverstream Spur

The stated purpose of a major road and infrastructure through the Spur is to open up the UHCC's "Southern Growth Area" (i.e.the Guildford Timber Company development) on the Silverstream and Pinehaven hills



136A Pinehaven Rd - Slip on edge of forestry harvesting in 8 Dec 2019 storm



Moonshine Rd – 200 tons of debris from one storm (2016)

