

## UTG - Urban Tree Groups

### *Resource Management Issues*

**UTG-I1** *Loss of significant trees within the Upper Hutt urban landscape.*

Trees are a prominent and important feature of the Upper Hutt urban landscape. Individually and collectively they are important for ecological, visual, environmental and cultural reasons.

### *Objective*

**UTG-O1** *Control development and vegetation removal within identified Urban Tree Groups to ensure their respective high amenity, landscape and/or ecological values are protected.*

The Urban Tree Groups have been specifically identified due to their contribution to the amenity, landscape and/or ecological values of the Upper Hutt townscape. It is important the development and vegetation removal/trimming within these Urban Tree Groups is controlled. This is to ensure that development and vegetation removal/trimming does not damage Urban Tree Groups to an extent that their high values for which they have been identified are significantly degraded or lost.

### *Policies*

**UTG-P1** *To protect trees of ecological, biophysical, historic, cultural or botanic value, or significant visual **amenity value** in both public and private ownership from **activities** which may result in adverse **effects** on these trees.*

Trees within the community are significant for ecological, biophysical, cultural, historic and aesthetic reasons. Trees are protected through a variety of methods, including rules and standards that apply to the Residential Conservation and Residential Hill Precincts.

**UTG-P2** *Identify Urban Tree Groups that contribute to the **amenity values**, landscape values and ecological values of the Upper Hutt townscape.*

The Urban Tree Groups have been specifically identified due to their respective contribution to the amenity, landscape, and/or ecological values of the Upper Hutt townscape. The protection of these Urban Tree Groups, and any further Urban Tree Groups in the future, is important to ensure that they continue to positively contribute to the townscape values of Upper Hutt.

**UTG-P3** *New development, **buildings** and works within **the dripline of a tree(s)** identified as being within an Urban Tree Group shall be undertaken in a manner that ensures their respective high **amenity values**, landscape values, and/or ecological values identified for the Urban Tree Group are protected.*

Development within the dripline of trees in the identified Urban Tree Groups has the potential to reduce or destroy the high values they contribute to the local **environment**. It is therefore important that development within the driplines, is appropriately managed to ensure that the integrity of the Urban Tree Group is protected and the Urban Tree Group continues to positively contribute to the local townscape.

**UTG-P4** *Tree trimming and removal shall be undertaken in a manner that ensures their respective high amenity values, landscape values and/or ecological values identified for the Urban Tree Group are protected.*

The removal and/or the trimming of trees from within these Urban Tree Groups, has the potential to reduce or destroy the values they contribute to the local **environment**. It is therefore important that tree removal/trimming, is appropriately managed to ensure that the integrity of the Urban Tree Group is protected and the Urban Tree Group continues to positively contribute to the local townscape.

**UTG-P5** *To support the trimming, **maintenance** and enhancement of Urban Tree Groups for their ongoing viability and contribution to their respective amenity values, landscape values, and/or ecological values and quality of the local townscape.*

The District Plan allows for some trimming of the scheduled trees within the Urban Tree Groups as a permitted activity. The level of trimming allowed is considered to strike an appropriate balance between allowing for **property** owners to undertake general **maintenance**, without affecting the form and health of the trees and their associated respective high visual amenity, landscape and/or ecological values.

**UTG-P6** *To support the trimming and removal of trees where they present an imminent threat to people, property and **network utilities**.*

There will be instances where a tree within an Urban Tree Group will present an immediate and imminent threat to people, property, or the safe operation of a **network utility**. Such instances are likely to arise as a result of a **natural hazard** event such as a storm, which may affect the structural integrity of an individual tree or group of trees. A tree may also lose its structural integrity over a prolonged period of time as a result of a disease to such an extent it becomes an immediate and imminent threat to people, property, or safe operation of a **network utility**. In such instances, it is appropriate that the tree is immediately removed to ensure that this threat is safely removed.

**UTG-P7** *To support the trimming of trees (including root pruning) and their removal to maintain the safe operation of **network utilities**.*

A number of the Urban Tree Groups are located close to the front **boundary** of their respective **properties**. The Legal **Road** contains **network utilities** that service a number of **properties**. These utilities may be covered by their own regulations that require vegetation to have a minimum separation distance (for example the Electricity (Hazards from Trees) Regulations 2003 outlines the minimum separation distance for trees from overhead powerlines). It is appropriate to include provisions within the District Plan to allow **network utility operators**, and private **property** owners, to comply with the requirements of other regulations, and to enable the safe operation of **network utilities** on an ongoing basis without the need for resource consent approval.

**UTG-P8** *To support the removal of pest and wilding tree species that could compromise the high **amenity values**, landscape values and/or ecological values of Urban Tree Groups.*

The Urban Tree Groups are located on private **property** and pest and wilding species have the potential to detract from the respective high amenity, landscape, and/or ecological values of these groups. It is therefore important that private **property** owners have a degree of flexibility in how they manage these groups through allowing them to remove pest or wilding species that may, overtime, detract or adversely affect the Urban Tree Groups.

## Rules

### Activities Table

Policies GRZ-P8, UTG-P1, UTG-P2, UTG-P3, UTG-P4, UTG-P5, UTG-P6, UTG-P7, UTG-P8

Permitted Activities			Zones
<b>UTG-R1</b>	<p>The trimming or removal of any non-indigenous tree (including roots) from an Urban Tree Group listed in UTG-SCHED1 where the identified individual tree species has a diameter of 0.2m or less, when measured in any direction at 1.5m above ground level.</p> <p><b>Note:</b> For the purposes of clarity this Permitted Activity only applies to non-<b>indigenous vegetation</b> and does not apply to <b>indigenous vegetation</b>. The Permitted Activity Standards below apply to all the identified <b>indigenous vegetation</b> in each Urban Tree Group identified in UTG-SCHED1 as well as to all identified non-indigenous species within each Urban Tree Group, over 0.2m diameter when measured in any direction at 1.5m above ground level.</p>	<b>PER</b>	<i>All</i>
<b>UTG-R2</b>	Any work, or <b>activity</b> proposed within the <b>dripline</b> of an identified tree(s) within an Urban Tree Group listed in UTG-SCHED1, which meets all the Permitted Activity Standards UTG-S1 to UTG-S6.	<b>PER</b>	<i>All</i>
<b>UTG-R3</b>	The trimming of an identified tree(s) within an Urban Tree Group listed in UTG-SCHED1, which meets all the Permitted Activity Standards UTG-S1 to UTG-S6.	<b>PER</b>	<i>All</i>
<b>UTG-R4</b>	The trimming or removal of any tree and the pruning of any tree roots (including roots over 50mm in diameter providing they are authorised by a <b>Council</b> approved arborist) in an Urban Tree Group listed in UTG-SCHED1 to maintain the safe operation of <b>network utility</b> infrastructure.	<b>PER</b>	<i>All</i>
<b>UTG-R5</b>	The trimming or removal of any tree (including roots) in an Urban Tree Group-listed in UTG-SCHED1, as an emergency work, where it presents an immediate threat to persons, habitable <b>buildings</b> , or a <b>network utility</b> .	<b>PER</b>	<i>All</i>
<b>UTG-R6</b>	Any work or <b>activity</b> within the <b>dripline</b> of, pruning of, or removal of any pest species of plant or wilding tree species as identified within each character area, including exotic <b>forestry</b> from an Urban Tree Group in UTG-SCHED1, which complies with Permitted Activity Standard UTG-S6, <b>Note:</b> The exotic <b>forestry</b> or wilding tree species for each character group are identified in UTG-SCHED1.	<b>PER</b>	<i>All</i>
<b>UTG-R7</b>	<p>The trimming or removal of a tree in an Urban Tree Group listed in UTG-SCHED1, where the removal is required on the assessment of a <b>Council</b> approved arborist because the tree is dead or has an incurable disease causing a significant decline in health. If part of the tree is required to be removed, then compliance with the New Zealand Arboriculture Association Best Practice Guideline for Amenity Tree Pruning identified in Permitted Activity Standard <del>27A.3</del> UTG-S1 is required. If the entire tree is required to be removed, then compliance with Permitted Activity Standard <del>27A.8</del> UTG-S6 is required.</p> <p><b>Note:</b></p>	<b>PER</b>	<i>All</i>

	<p><b>Council</b> shall be advised in writing of work under this Permitted Activity at least seven days prior to the commencement of works. At time of advising, the <b>land</b> owner shall provide details on the species of tree to be removed, the site address, its position on the site, the reasons for removal, and the date of removal.</p>		
Standards for Permitted Activities		Zones	
<p><b>UTG-S1</b></p> <p><i>Policies</i> GRZ-P8, UTG-P1, UTG-P2, UTG-P3, UTG-P4, UTG-P5, UTG-P6, UTG-P7, UTG-P8</p>	<p>(1) Trimming of an identified tree(s) within an Urban Tree Group listed in UTG-SCHED1, shall be undertaken in accordance with the New Zealand Arboriculture Association Best Practice Guideline for Amenity Tree Pruning, dated April 2011 or any subsequent revision of this document. Such trimming shall not detrimentally alter the form of the tree.</p>	<p>All</p>	
<p><b>UTG-S2</b></p> <p><i>Policies</i> GRZ-P8, UTG-P1, UTG-P3, UTG-P4, UTG-P5, UTG-P6, UTG-P7</p>	<p>(1) The removal of any deadwood from any identified tree in an Urban Tree Group listed in UTG-SCHED1.</p>	<p>All</p>	
<p><b>UTG-S3</b></p> <p><i>Policies</i> GRZ-P8, UTG-P1, UTG-P3</p>	<p>(1) The laying of any permeable surface under the <b>dripline</b> of any identified tree in an Urban Tree Group listed in UTG-SCHED1.</p>	<p>All</p>	
<p><b>UTG-S4</b></p> <p><i>Policies</i> UTG-P1 UTG-P2</p>	<p>(1) The pruning or trimming of any roots from any identified tree in an Urban Tree Group listed in UTG-SCHED1, providing the diameter of the root at the point of cutting does not exceed 50mm when measured in any one direction.</p>	<p>All</p>	
<p><b>UTG-S5</b></p> <p><i>Policies</i> GRZ-P8, UTG-P1,</p>	<p>(1) No hazardous materials, or chemicals shall be stored within the <b>dripline</b> of any identified tree in an Urban Tree Group listed in UTG-SCHED1.</p>	<p>All</p>	

<i>UTG-P3</i>		
<b>UTG-S6</b>  <i>Policies GRZ-P8, UTG-P1, UTG-P2, UTG-P3, UTG-P8</i>	(1) All areas of felled vegetation that results in visibly exposed areas of soil shall be replanted within 6 months of the vegetation being felled.	<i>All</i>

<b>Discretionary Activities</b>		<b>Zones</b>
<b>UTG-R8</b>	The trimming, removal, or any <b>activity</b> within the <b>dripline</b> of an identified tree(s) within an Urban Tree Group listed in UTG-SCHED1, which is not a Permitted Activity, or does not meet the standards specified in-UTG-S1 to UTG-S6.	<b>DIS</b>  <i>All</i>

**Matters for Consideration**

Matters that may be relevant in the consideration of any resource consent may include the following:

<b>UTG-MC1</b>  <i>Policies GRZ-P8, UTG-P1, UTG-P2, UTG-P3, UTG-P4, UTG-P5, UTG-P6, UTG-P7, UTG-P8</i>	<p><b>Urban Tree Groups</b></p> <p>The contribution that the tree(s) make to their respective high landscape, amenity, and/or ecological values identified for the Urban Tree Group and the <b>effect</b> on the overall integrity of the tree group resulting from the trimming/removal of the tree(s).</p> <ol style="list-style-type: none"> <li>(1) The health and state of the tree(s) to be removed.</li> <li>(2) The visual prominence of the tree (s) when viewed from the local <b>environment</b></li> <li>(3) Whether the work would be likely to damage the form of the tree or affect the long-term health and survivability of the tree.</li> <li>(4) The extent of the works/<b>activity</b> within the <b>dripline</b> of the Urban Tree Groups.</li> <li>(5) The necessity for the works.</li> <li>(6) Whether there are alternative methods that maintain the health and form of the tree(s) in the Urban Tree Group while still meeting the objectives of the applicant.</li> <li>(7) The extent to which any suggested mitigation planting will ensure the <b>maintenance</b> or enhancement of their respective high landscape, amenity and/or ecological values identified for the Urban Tree Group.</li> <li>(8) The <b>effect</b> of the tree(s) in the Urban Tree Group on the amenity of the occupants of any residential <b>property</b> and their reasonable use of their <b>property</b>.</li> <li>(9) Whether the trees present any unreasonable limitations to the use of existing driveways onto <b>property</b>.</li> </ol>
--	--

## Methods

**UTG-M1** District Plan provisions consisting of the following:

- (1) groups of trees included in the Schedule of Urban trees (UTG-SCHED1).

**UTG-M2** Reserve Management Plans, which the Council is required to produce for reserves gazetted under the Reserves Act 1977, manage natural areas located on public land. These plans include provisions relating to protection and preservation of areas for their intrinsic worth, indigenous flora and fauna, scenic, scientific or historic value. These provisions may include fencing of the area to avoid, remedy or mitigate the impact of outside influences, or facilitation of natural rehabilitation or restoration.

**UTG-M3** The Council will consult with potentially affected landowners and occupiers, the **tangata whenua**, Orongomai Marae Committee, Department of Conservation, Wellington Regional Council, volunteer groups and other interested parties as appropriate.

**UTG-M4** To implement a scheme aimed to assist landowners when work is required to maintain or enhance the health of notable trees or Urban Tree Groups.

**UTG-M5** Implementation of an on-going education programme regarding how to maintain and enhance Urban Tree Groups to ensure that their respective high amenity values, landscape values, and/or ecological values are maintained. This can be achieved through pamphlets, displays, talks, and information on the website. Where appropriate, the Council will work with other authorities, including the Greater Wellington Regional Council, the Department of Conservation and community groups, to ensure that public education is co-ordinated within Upper Hutt.

## Anticipated Environmental Results

The following results are expected to be achieved by the objectives, policies and methods of this chapter. The means of monitoring whether this Plan achieves the anticipated environmental results are also set out below.

Anticipated environmental results		Monitoring indicators	Data source
<b>UTG-AER1</b>	The protection and retention of identified Urban Tree Groups in a manner that maintains their respective amenity, landscape, and ecological values	Type and number of resource consents and compliance with conditions Feedback from the community	<b>Council</b> records Community feedback

## UTG-Schedule1 - Urban Tree Groups

### Criteria for Urban Tree Groups to be added to the Schedule

Policies GRZ-P8, UTG-P2

In determining urban tree groups to be included on the Schedule by way of a Plan Change the tree groups shall be assessed by a suitably qualified ecologist, landscape architect or equivalent against the assessment criteria set out in the Urban Tree Group Assessment Methodology (21 August 2015) prepared by Boffa Miskell Ltd.

### UTG-SCHED1 - Urban Tree Groups

Urban tree groups in the City have been assessed for amenity, landscape and ecological value.

All Urban Tree Groups are identified by street address and provide a description of what constitutes each individual group.

All Urban Tree Groups are identified on the Urban Tree Groups Overlay Area maps by a defined overlay area and the number in this Schedule.

### CHARACTER AREA: CHATSWORTH

#### Chatsworth Road

The Chatsworth Road Character Area extends along the toe of the Eastern Hills of the Hutt Valley.

Mature trees form a dominant feature of the Chatsworth Road area and provide a strong framework within which residential development has been established. Fingers of mature native remnant vegetation protrude into the residential area from adjoining native bush established in Wi Tako Reserve. Mature exotic specimen trees complement this established wooded setting.

A higher proportion of native trees are retained at the northern end of the character area with native stands typically forming a dense canopy within gully areas. Tree groups generally dissipate through flatter areas of topography in association with introduced residential development.

Where exotic specimen planting has occurred, this typically includes larger 'parkland' specimens which enclose street frontages and **property boundaries**. Mature gum and redwood trees also form prominent local features, particularly along the margins of the larger native woodland backdrop. Wilding pine and brush wattle also form pest plant species within some woodland areas.

#### TREE SPECIES

##### Notable Native Trees (including remnants)

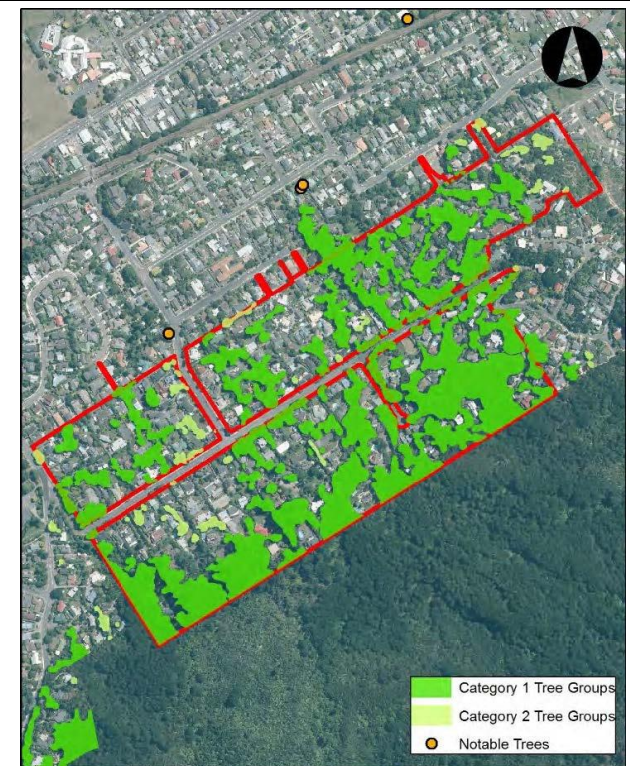
Red Beech (*Fuscopora fusca*)

Black Beech (*Fuscopora solandri*)

Rimu (*Dacrydium cupressinum*) Kahikatea (*Dacrycarpus dacrydioides*)

Matai (*Prumnopitys taxifolia*) Tawa (*Beilschmiedia tawa*)

Miro (*Prumnopitys ferruginea*) Putaputaweta (*Carpodetus serratus*)



Totara (*Podocarpus totara*) Hinau (*Elaeocarpus dentatus*)  
 Kowhai (*Sophora spp.*) Cabbage tree (*Cordyline australis*)  
 Lancewood (*Pseudopanax crassifolius*) Tree daisy (*Olearia spp.*)  
 Tree fern (*Cyathea medullaris*, *Dicksonia squarrosa*) Pate (*Schefflera digitata*)  
 Kamahi (*Weinmannia racemosa*) Toro (*Myrsine salicina*)  
 Kanuka (*Kunzea ericoides*)

**Notable Exotic Trees**

Giant Redwood (*Sequoiadendron giganteum*) Oak (*Quercus spp.*)  
 Ash (*Fraxinus spp.*) Elm (*Ulmus spp.*)  
 Gum (*Eucalyptus spp.*) Tulip tree (*Liriodendron tulipifera*)  
 Liquidambar (*Liquidambar styraciflua*) Poplar (*Populus spp.*)  
 Cypress (*Cupressus spp.*) Cedar (*Cedrus spp.*)  
 Silver Birch (*Betula spp.*) Honey Locust (*Gladitsia triancanthos*)  
 Fir (*Abies spp.*) Douglas fir (*Pseudotsuga menziesii*)

Exotic **forestry** / wilding tree species

Pine (*Pinus radiata*)

Brush Wattle (*Paraserianthes lophantha*)

**THREATS**

- Indiscriminate pruning / topping
- Removal of diverse under-storey
- Compaction of soil / **land** within the tree drip zone
- Inappropriate siting of **structures** / utilities
- Damage from pest plants and animals

**Character Area: Chatsworth - Urban Tree Groups**

No	Map Ref	Location	Tree Group Description	High Values
1	41	1 Chatsworth Road	Cluster of over 30 trees comprised of beech, totara, kowhai, rimu up to approximately 15m located on corner of property bordering Chatsworth Road on two sides.	<p>LANDSCAPE - Mature, uncommon, unusual or rare exotic specimens and/or indigenous remnants and tree group maintains a strong natural form which is well established and integrated within the surrounding landscape</p> <p>AMENITY - Tree group represents a key characteristic of the urban environment and is regarded as a signature of place</p>



				ECOLOGY - Tree group canopy dominated by remnant tree(s) and naturally occurring associated vegetation which are native to that environment (i.e. early or pre-human)
2	41	3 Chatsworth Road 45 Whitemans Road 47 Whitemans Road 5 Chatsworth Road	Cluster of 7 - 10 trees comprised of beech, totara, kowhai, oak up to approximately 19m located in rear garden following property boundary.	LANDSCAPE - Mature, uncommon, unusual or rare exotic specimens and/or indigenous remnants and tree group maintains a strong natural form which is well established and integrated within the surrounding landscape  AMENITY - Tree group represents a key characteristic of the urban environment and is regarded as a signature of place
3	41	7A Chatsworth Road 7 Chatsworth Road 45 Whitemans Road 7B Chatsworth Road 7C Chatsworth Road 5 Chatsworth Road	Cluster of 7 - 10 trees comprised of beech, redwood, oak, liquidambar up to approximately 19m located lining driveway and rear <b>boundary</b> separating <b>properties</b> .	LANDSCAPE - Mature, uncommon, unusual or rare exotic specimens and/or indigenous remnants and tree group maintains a strong natural form which is well established and integrated within the surrounding landscape  AMENITY - Tree group represents a key characteristic of the urban <b>environment</b> and is regarded as a signature of place
4	41	37A Whitemans Road 37 Whitemans Road 39 Whitemans Road 35A Whitemans Road 35 Whitemans Road 39A Whitemans Road 43 Whitemans Road	Cluster of 7 - 10 trees comprised of oak, cypress, totara, rimu, willow up to approximately 12m located set back from <b>road</b> behind <b>Residential Units</b> , aligning with driveway.	LANDSCAPE - Tree group maintains a strong natural form which is well established and integrated within the surrounding landscape.  AMENITY - Tree group represents a key characteristic of the urban <b>environment</b> and is regarded as a signature of place.
5	41	45B Dowling Grove 45A Dowling Grove 7A Chatsworth Road 7 Chatsworth Road 35 Whitemans Road 43C Dowling Grove 7C Chatsworth Road 11 Chatsworth Road 13 Chatsworth Road 15 Chatsworth Road 17 Chatsworth Road 49 Dowling Grove 9A Chatsworth Road 9 Chatsworth Road 40A Gloucester Street 40B Gloucester Street	Cluster of over 30 trees comprised of oak, poplar, kowhai, eucalypt, beech, totara, cabbage tree, redwood, kahikatea, rimu, alder, birch up to approximately 19m located extending from Chatsworth Road along gully and internal <b>boundaries</b> .	LANDSCAPE - Mature, uncommon, unusual or rare exotic specimens and/or indigenous remnants and tree group maintains a strong natural form which is well established and integrated within the surrounding landscape.  AMENITY - Tree group represents a key characteristic of the urban <b>environment</b> and is regarded as a signature of place.

		40C Gloucester Street 38A Gloucester Street 44 Gloucester Street		
6	41	40 Gloucester Street 40A Gloucester Street 38 Gloucester Street 38A Gloucester Street	Grove of 2 - 3 trees comprised of oak up to approximately 17m located established along rear <b>boundary</b> .	LANDSCAPE - Tree group maintains a strong natural form which is well established and integrated within the surrounding landscape.  AMENITY - Tree group represents a key characteristic of the urban <b>environment</b> and is regarded as a signature of place.
7	41	42 Gloucester Street 40 Gloucester Street 40A Gloucester Street 40B Gloucester Street 40C Gloucester Street 38 Gloucester Street 38C Gloucester Street	Cluster of 2 - 3 trees comprised of oak, redwood up to approximately 15m located at side of driveway adjoining street front.	AMENITY - Tree group represents a key characteristic of the urban <b>environment</b> and is regarded as a signature of place.
8	41	11 Chatsworth Road 13 Chatsworth Road 15 Chatsworth Road	Cluster of 7 - 10 trees comprised of beech, oak, cedar, totara, kowhai up to approximately 14m located on street frontage, garden border.	AMENITY - Tree group represents a key characteristic of the urban <b>environment</b> and is regarded as a signature of place.
9	41	7 Chatsworth Road 9 Chatsworth Road	Cluster of 11 - 15 trees comprised of oak, kowhai, silver birch up to approximately 11m located on street frontage extending along <b>property boundary</b> .	LANDSCAPE - Mature, uncommon, unusual or rare exotic specimens and/or indigenous remnants and tree group maintains a strong natural form which is well established and integrated within the surrounding landscape  AMENITY - Tree group represents a key characteristic of the urban <b>environment</b> and is regarded as a signature of place.  ECOLOGY - Tree group canopy dominated by remnant tree(s) and naturally occurring associated vegetation which are native to that <b>environment</b> . (i.e. early or pre-human)
10	41	25 Gloucester Street 27 Gloucester Street 23B Chatsworth Road 27A Chatsworth Road 27B Chatsworth Road 21 Chatsworth Road 23 Chatsworth Road	Cluster of over 30 trees comprised of beech, kowhai, totara, hinau, oak, cabbage tree, redwood, cypress, kahikatea, rimu, fir up to approximately 24m located in band running in rear gardens and following stream.	LANDSCAPE - Mature, uncommon, unusual or rare exotic specimens and/or indigenous remnants and tree group maintains a strong natural form which is well established and integrated within the surrounding landscape  AMENITY - Tree group represents a key characteristic of the urban <b>environment</b> and is regarded as a signature of place

				ECOLOGY - Tree group canopy dominated by remnant tree(s) and naturally occurring associated vegetation which are native to that <b>environment</b> (i.e. early or pre-human)
11	41	6A Chatsworth Road 6 Chatsworth Road 8A Chatsworth Road	Cluster of 2 - 3 trees comprised of liquidambar, kowhai up to approximately 10m located joining front garden bordering driveway.	AMENITY - Tree group represents a key characteristic of the urban <b>environment</b> and is regarded as a signature of place
12	41	8A Chatsworth Road 8 Chatsworth Road 10 Chatsworth Road	Cluster of 11 - 15 trees comprised of cypress, oak, silver birch, juniper, rimu, liquidambar up to approximately 12m located in front garden.	AMENITY - Tree group represents a key characteristic of the urban <b>environment</b> and is regarded as a signature of place
13	41	12B Chatsworth Road 14 Chatsworth Road 12 Chatsworth Road 12D Chatsworth Road	Cluster of 11 - 15 trees comprised of cedar, eucalypt, kowhai, cypress, liquidambar, cabbage tree, totara up to approximately 26m located in rear <b>property</b> along driveway.	AMENITY - Tree group represents a key characteristic of the urban <b>environment</b> and is regarded as a signature of place
16	41	22 Chatsworth Road 22D Chatsworth Road	Cluster of 7 - 10 trees comprised of cypress, rimu, totara, up to approximately 13m located in wooded front garden bordering street.	AMENITY - Tree group represents a key characteristic of the urban <b>environment</b> and is regarded as a signature of place
17	41 42	24D Chatsworth Road 26A Chatsworth Road 26C Chatsworth Road	Grove of 4 - 6 trees comprised of redwood up to approximately 30m located in rear garden / internal <b>boundary</b> specimens.	LANDSCAPE - Mature, uncommon, unusual or rare exotic specimens and/or indigenous remnants and tree group maintains a strong natural form which is well established and integrated within the surrounding landscape  AMENITY - Tree group represents a key characteristic of the urban <b>environment</b> and is regarded as a signature of place
18	41	13 Chatsworth Road 15 Chatsworth Road 17 Chatsworth Road 44 Gloucester Street 40C Gloucester Street	Cluster of 11 - 15 trees comprised of kowhai, cabbage tree, up to approximately 15m located extending from Chatsworth Road following internal <b>property boundaries</b> .	AMENITY - Tree group represents a key characteristic of the urban <b>environment</b> and is regarded as a signature of place
21	42	26B Chatsworth Road 26C Chatsworth Road 30C Chatsworth Road 32A Chatsworth Road 34A Chatsworth Road	Cluster of over 30 trees comprised of beech (red and black), rimu, matai, tawa, kahikatea, miro, tawa redwood, cabbage tree, tree daisy, tree fern, toro, lancewood up to approximately 28m located backdrop of indigenous trees contiguous with reserve	LANDSCAPE - Mature, uncommon, unusual or rare exotic specimens and/or indigenous remnants and a large contiguous tree group or part of a wider indigenous forest group and tree group maintains a strong natural form which is well established and integrated within the surrounding landscape.

			behind. Mature remnants typically retained in gullies.	<p>AMENITY - Tree group represents a key characteristic of the urban <b>environment</b> and is regarded as a signature of place.</p> <p>ECOLOGY - Tree group canopy dominated by remnant tree(s) and naturally occurring associated vegetation which are native to that <b>environment</b> (i.e. early or pre-human).</p>
23	42	32A Chatsworth Road 34A Chatsworth Road 34 Chatsworth Road 36A Chatsworth Road 36B Chatsworth Road 36 Chatsworth Road	Cluster of 21 - 30 trees comprised of beech, rimu, cypress, oak up to approximately 12m located in front garden along driveway.	<p>LANDSCAPE - Mature, uncommon, unusual or rare exotic specimens and/or indigenous remnants.</p> <p>AMENITY - Tree group represents a key characteristic of the urban <b>environment</b> and is regarded as a signature of place.</p> <p>ECOLOGY - Tree group canopy dominated by remnant tree(s) and naturally occurring associated vegetation which are native to that <b>environment</b> (i.e. early or pre-human).</p>
24	42	30B Chatsworth Road 30C Chatsworth Road 32A Chatsworth Road 32 Chatsworth Road 34A Chatsworth Road 34 Chatsworth Road	Cluster of 11 - 15 trees comprised of oak, poplar, beech, rimu, liquidambar, kowhai, cypress up to approximately 21m located on rear <b>boundary</b> / garden.	<p>LANDSCAPE - Tree group maintains a strong natural form which is well .established and integrated within the surrounding landscape.</p> <p>AMENITY - Tree group represents a key characteristic of the urban <b>environment</b> and is regarded as a signature of place.</p>
25	42	30C Chatsworth Road 32A Chatsworth Road	Line of 11 - 16 trees comprised of cypress, kowhai, up to approximately 14m located in rear garden / internal <b>boundary</b> .	<p>AMENITY - Tree group represents a key characteristic of the urban <b>environment</b> and is regarded as a signature of place</p>
28	41	38C Gloucester Street 38B Gloucester Street 38A Gloucester Street	Cluster of trees comprised of oak, totara up to approximately 13m located in front garden.	<p>AMENITY - Tree group represents a key characteristic of the urban <b>environment</b> and is regarded as a signature of place</p>
30	41	19 Chatsworth Road 21 Chatsworth Road 23B Chatsworth Road	Cluster of 7 - 10 trees comprised of beech, kowhai up to approximately 15m located in front garden and along driveway.	<p>LANDSCAPE - Mature, uncommon, unusual or rare exotic specimens and/or indigenous remnants and tree group maintains a strong natural form which is well established and integrated within the surrounding landscape.</p> <p>AMENITY - Tree group represents a key characteristic of the urban <b>environment</b> and is regarded as a signature of place.</p> <p>ECOLOGY - Tree group canopy dominated by remnant tree(s) and naturally occurring associated vegetation which are native to that <b>environment</b> (i.e. early or pre-human).</p>

31	41	8 Marlborough Street 21A Gloucester Street 10 Marlborough Street 12 Marlborough Street 16 Marlborough Street 21 Gloucester Street 6 Marlborough Street	Cluster of 11 - 15 trees comprised of totara, oak up to approximately 11m located in strip running along <b>boundary</b> to rear of <b>properties</b> .	AMENITY - Tree group represents a key characteristic of the urban <b>environment</b> and is regarded as a signature of place
32	41 42	16 Marlborough Street 18 Marlborough Street 27B Chatsworth Road 29B Chatsworth Road 31B Chatsworth Road 31C Chatsworth Road 21 Gloucester Street	Cluster of 4 - 6 trees comprised of oak, eucalypt, redwood, kowhai up to approximately 26m located in rear garden and following <b>property boundaries</b> .	LANDSCAPE - Tree group maintains a strong natural form which is well established and integrated within the surrounding landscape.  AMENITY - Tree group represents a key characteristic of the urban <b>environment</b> and is regarded as a signature of place.
33	42	24 Marlborough Street 28A Marlborough Street 28C Marlborough Street 33A Chatsworth Road 33B Chatsworth Road 35 Chatsworth Road 37 Chatsworth Road 39A Chatsworth Road 39B Chatsworth Road 39C Chatsworth Road	Cluster of 16 - 20 trees comprised of rimu, beech, kahikatea, totara up to approximately 22m located band of trees running along stream and rear garden <b>boundaries</b> with individual specimens in gardens.	LANDSCAPE - Mature, uncommon, unusual or rare exotic specimens and/or indigenous remnants and tree group maintains a strong natural form which is well established and integrated within the surrounding landscape.  AMENITY - Tree group represents a key characteristic of the urban <b>environment</b> and is regarded as a signature of place.  ECOLOGY - Tree group canopy dominated by remnant tree(s) and naturally occurring associated vegetation which are native to that <b>environment</b> (i.e. early or pre-human)
40	41	18C Chatsworth Road 20B Chatsworth Road 18B Chatsworth Road	Cluster of 4 - 6 trees comprised of ash, juniper, cedar, cabbage tree, up to approximately 10m located in rear garden on elevated area.	AMENITY - Tree group represents a key characteristic of the urban <b>environment</b> and is regarded as a signature of place
41	41	22C Chatsworth Road 24A Chatsworth Road 24B Chatsworth Road 24C Chatsworth Road 24D Chatsworth Road 24 Chatsworth Road 26A Chatsworth Road 26B Chatsworth Road 26C Chatsworth Road 26 Chatsworth Road	Cluster of 11 - 15 trees comprised of birch, rimu, totara, oak, tulip tree, ash, poplar, kowhai, juniper up to approximately 22m located wooded front gardens bordering <b>road</b> .	LANDSCAPE - Tree group maintains a strong natural form which is well established and integrated within the surrounding landscape.  AMENITY - Tree group represents a key characteristic of the urban <b>environment</b> and is regarded as a signature of place.

		28A Chatsworth Road 28 Chatsworth Road		
42	41	22A Chatsworth Road 22B Chatsworth Road 22C Chatsworth Road 22D Chatsworth Road 24 Chatsworth Road 24B Chatsworth Road	Cluster of 4 - 6 trees comprised of macrocarpa, totara, eucalypt, beech, oak up to approximately 20m located straddling shared driveway.	LANDSCAPE - Tree group maintains a strong natural form which is well established and integrated within the surrounding landscape AMENITY - Tree group represents a key characteristic of the urban <b>environment</b> and is regarded as a signature of place
43	42	42 Chatsworth Road 46 Chatsworth Road 50A Chatsworth Road 50 Chatsworth Road 52A Chatsworth Road 52B Chatsworth Road 52 Chatsworth Road 58A Chatsworth Road 5 Tiroa Grove 7A Tiroa Grove 7B Tiroa Grove 7C Tiroa Grove 7 Tiroa Grove 9 Tiroa Grove 68D Chatsworth Road 58D Chatsworth Road 58E Chatsworth Road 58F Chatsworth Road	Grove of over 30 trees comprised of beech (red and black), rimu, kahikatea, rewarewa, titoki, kamihi, lancewood, silver fern, gully fern, toro up to approximately 27m located vegetated rear gardens and gully extending between Chatsworth Road and Wi Tako	LANDSCAPE - Mature, uncommon, unusual or rare exotic specimens and/or indigenous remnants and a large contiguous tree group or part of a wider indigenous forest group and tree group maintains a strong natural form which is well established and integrated within the surrounding landscape  AMENITY - Tree group represents a key characteristic of the urban <b>environment</b> and is regarded as a signature of place  ECOLOGY - Tree group canopy dominated by remnant tree(s) and naturally occurring associated vegetation which are native to that <b>environment</b> (i.e. early or pre-human) and natural structure of tree group is largely intact, a contiguous canopy, sub-canopy tiers and epiphytes present
44	42	4 Tiroa Grove 6 Tiroa Grove 8 Tiroa Grove 10 Tiroa Grove	Cluster of 16 - 20 trees comprised of totara, rimu, beech, kowhai, hinau, tawa up to approximately 17m located along street front, running into rear of <b>properties</b> along stream edge.	LANDSCAPE - Mature, uncommon, unusual or rare exotic specimens and/or indigenous remnants and tree group maintains a strong natural form which is well established and integrated within the surrounding landscape  AMENITY - Tree group represents a key characteristic of the urban <b>environment</b> and is regarded as a signature of place  ECOLOGY - Tree group canopy dominated by remnant tree(s) and naturally occurring associated vegetation which are native to that <b>environment</b> (i.e. early or pre-human)

46	42	2A Tiniroa Grove 2 Tiniroa Grove 32A Chatsworth Road 34A Chatsworth Road 36A Chatsworth Road 36B Chatsworth Road 36 Chatsworth Road 38 Chatsworth Road 40 Chatsworth Road 4 Tiniroa Grove 6 Tiniroa Grove	Cluster of over 30 trees comprised of rimu, beech, miro up to approximately 21m located in band running through gully from street frontage back to rear of <b>properties</b> .	<p>LANDSCAPE - Mature, uncommon, unusual or rare exotic specimens and/or indigenous remnants and tree group maintains a strong natural form which is well established and integrated within the surrounding landscape</p> <p>AMENITY - Tree group represents a key characteristic of the urban <b>environment</b> and is regarded as a signature of place</p> <p>ECOLOGY - Tree group canopy dominated by remnant tree(s) and naturally occurring associated vegetation which are native to that <b>environment</b> (i.e. early or pre-human)</p>
47	42	34A Chatsworth Road 36A Chatsworth Road 10 Tiniroa Grove 11 Tiniroa Grove 6 Tiniroa Grove 7 Tiniroa Grove 8 Tiniroa Grove 9 Tiniroa Grove	Cluster of over 30 trees comprised of beech (red & black), rimu, matai, tawa, kahikatea, miro, redwood, eucalypt, macrocarpa, cabbage tree, tree daisy, tree fern, toro, lancewood up to approximately 25m located backdrop of indigenous trees contiguous with reserve behind. Mature remnants typically retained in gullies.	<p>LANDSCAPE - Mature, uncommon, unusual or rare exotic specimens and/or indigenous remnants and a large contiguous tree group or part of a wider indigenous forest group and tree group maintains a strong natural form which is well established and integrated within the surrounding landscape</p> <p>AMENITY - Tree group represents a key characteristic of the urban <b>environment</b> and is regarded as a signature of place</p> <p>ECOLOGY - Tree group canopy dominated by remnant tree(s) and naturally occurring associated vegetation which are native to that <b>environment</b> (i.e. early or pre-human)</p>
48	42	52B Chatsworth Road 58A Chatsworth Road Lot 1 DP 57567	Cluster of 21 - 30 trees comprised of beech, rimu, pate, kamihi, hinau, eucalypt, kowhai up to approximately 12m located in rear garden / internal <b>boundary</b> on embankment adjacent driveway.	<p>LANDSCAPE - Mature, uncommon, unusual or rare exotic specimens and/or indigenous remnants</p> <p>AMENITY - Tree group represents a key characteristic of the urban <b>environment</b> and is regarded as a signature of place</p> <p>ECOLOGY - Tree group canopy dominated by remnant tree(s) and naturally occurring associated vegetation which are native to that <b>environment</b> (i.e. early or pre-human)</p>
49	42	58A Chatsworth Road 58B Chatsworth Road 60 Chatsworth Road 62A Chatsworth Road Lot 1 DP 57567	Cluster of over 30 trees comprised of beech, kanuka, rimu up to approximately 20m located rising <b>land</b> within rear gardens and <b>property boundaries</b> .	<p>LANDSCAPE - Mature, uncommon, unusual or rare exotic specimens and/or indigenous remnants and tree group maintains a strong natural form which is well established and integrated within the surrounding landscape</p> <p>AMENITY - Tree group represents a key characteristic of the urban <b>environment</b> and is regarded as a signature of place</p>

				ECOLOGY - Tree group canopy dominated by remnant tree(s) and naturally occurring associated vegetation which are native to that <b>environment</b> (i.e. early or pre-human)
50	42	52B Chatsworth Road 52 Chatsworth Road 54 Chatsworth Road 56 Chatsworth Road 58 Chatsworth Road Lot 1 DP 57567	Grove of over 30 trees comprised of beech, rimu up to approximately 19m located street front gardens connecting along rear <b>boundaries</b> .	LANDSCAPE - Mature, uncommon, unusual or rare exotic specimens and/or indigenous remnants and tree group maintains a strong natural form which is well established and integrated within the surrounding landscape  AMENITY - Tree group represents a key characteristic of the urban <b>environment</b> and is regarded as a signature of place  ECOLOGY - Tree group canopy dominated by remnant tree(s) and naturally occurring associated vegetation which are native to that <b>environment</b> (i.e. early or pre-human)
51	42	52 Chatsworth Road 54 Chatsworth Road	Grove of 7 - 10 trees comprised of beech up to approximately 17m located street frontage above bank.	LANDSCAPE - Mature, uncommon, unusual or rare exotic specimens and/or indigenous remnants  AMENITY - Tree group represents a key characteristic of the urban <b>environment</b> and is regarded as a signature of place  ECOLOGY - Tree group canopy dominated by remnant tree(s) and naturally occurring associated vegetation which are native to that <b>environment</b> (i.e. early or pre-human)
52	42	50 Chatsworth Road	Cluster of 4 - 6 trees comprised of rimu, totara up to approximately 10m located in front garden, street frontage.	AMENITY - Tree group represents a key characteristic of the urban <b>environment</b> and is regarded as a signature of place  ECOLOGY - Tree group canopy dominated by remnant tree(s) and naturally occurring associated vegetation which are native to that <b>environment</b> (i.e. early or pre-human)
53	41 42	28 Chatsworth Road 30A Chatsworth Road 30B Chatsworth Road 30C Chatsworth Road 30 Chatsworth Road 32A Chatsworth Road 32 Chatsworth Road 34 Chatsworth Road	Cluster of 11 - 15 trees comprised of beech, copper beech, ash, oak, redwood, kowhai up to approximately 20m located in front garden vegetation adjoining street frontage.	LANDSCAPE - Tree group maintains a strong natural form which is well established and integrated within the surrounding landscape  AMENITY - Tree group represents a key characteristic of the urban <b>environment</b> and is regarded as a signature of place



54	42	31A Chatsworth Road 31B Chatsworth Road 31C Chatsworth Road 31 Chatsworth Road 33A Chatsworth Road 33B Chatsworth Road 33 Chatsworth Road	Cluster of 7 - 10 trees comprised of liquidambar, beech, kowhai, rimu, oak up to approximately 15m located in front garden extending along driveway <b>boundaries</b> .	<p>LANDSCAPE - Mature, uncommon, unusual or rare exotic specimens and/or indigenous remnants and tree group maintains a strong natural form which is well established and integrated within the surrounding landscape</p> <p>AMENITY - Tree group represents a key characteristic of the urban <b>environment</b> and is regarded as a signature of place</p> <p>ECOLOGY - Tree group canopy dominated by remnant tree(s) and naturally occurring associated vegetation which are native to that <b>environment</b> (i.e. early or pre-human)</p>
55	42	27A Chatsworth Road 27B Chatsworth Road 27C Chatsworth Road 29 Chatsworth Road	Cluster of 2 - 3 trees comprised of redwood up to approximately 16m located along driveway, to <b>road</b> front.	<p>AMENITY - Tree group represents a key characteristic of the urban <b>environment</b> and is regarded as a signature of place</p>
56	42	37 Chatsworth Road 39 Chatsworth Road	Cluster of 11 - 15 trees comprised of matai, beech up to approximately 17m located in front garden, street frontage.	<p>LANDSCAPE - Mature, uncommon, unusual or rare exotic specimens and/or indigenous remnants and tree group maintains a strong natural form which is well established and integrated within the surrounding landscape</p> <p>AMENITY - Tree group represents a key characteristic of the urban <b>environment</b> and is regarded as a signature of place</p> <p>ECOLOGY - Tree group canopy dominated by remnant tree(s) and naturally occurring associated vegetation which are native to that <b>environment</b> (i.e. early or pre-human)</p>
57	42	39A Chatsworth Road 39 Chatsworth Road	Cluster of 4 - 6 trees comprised of rimu, kahikatea, birch, beech, cypress, up to approximately 11m located in rear garden (not fully visible).	<p>AMENITY - Tree group represents a key characteristic of the urban <b>environment</b> and is regarded as a signature of place</p>
58	42	22A Pempsey Street 26 Pempsey Street 28B Marlborough Street 28C Marlborough Street 28D Marlborough Street 28 Pempsey Street 30 Marlborough Street 30 Pempsey Street 32 Marlborough Street 39B Chatsworth Road	Cluster of over 30 trees comprised of beech, rimu, kahikatea, kowhai up to approximately 24m located large band spanning gully, running internally through rear of <b>properties</b> .	<p>LANDSCAPE - Mature, uncommon, unusual or rare exotic specimens and/or indigenous remnants and tree group maintains a strong natural form which is well established and integrated within the surrounding landscape</p> <p>AMENITY - Tree group represents a key characteristic of the urban <b>environment</b> and is regarded as a signature of place</p> <p>ECOLOGY - Tree group canopy dominated by remnant tree(s) and naturally occurring associated vegetation which are native to that <b>environment</b> (i.e. early or pre-human)</p>

		<p>39C Chatsworth Road  41A Chatsworth Road  41D Chatsworth Road  43 Chatsworth Road  41B Chatsworth Road  41C Chatsworth Road  41 Chatsworth Road  45A Chatsworth Road  45 Chatsworth Road  51 Chatsworth Road  53A Chatsworth Road  53B Chatsworth Road  53C Chatsworth Road  53D Chatsworth Road  53E Chatsworth Road  53 Chatsworth Road  55 Chatsworth Road  49 Chatsworth Road</p>		
59	42	<p>53B Chatsworth Road  53C Chatsworth Road  53D Chatsworth Road</p>	<p>Cluster of 11 - 15 trees comprised of oak, maple, totara, beech, cabbage tree, rimu, lancewood up to approximately 16m located garden specimen trees extending along rear <b>boundary</b>.</p>	<p>LANDSCAPE - Tree group maintains a strong natural form which is well established and integrated within the surrounding landscape</p> <p>AMENITY - Tree group represents a key characteristic of the urban <b>environment</b> and is regarded as a signature of place</p>
60	42	<p>41B Chatsworth Road  51 Chatsworth Road  53A Chatsworth Road  53B Chatsworth Road  53C Chatsworth Road  53D Chatsworth Road  53 Chatsworth Road  57A Chatsworth Road</p>	<p>Cluster of over 30 trees comprised of totara, beech, rimu, kowhai, up to approximately 12m located following stream margin and extending into rear gardens.</p>	<p>LANDSCAPE - Tree group maintains a strong natural form which is well established and integrated within the surrounding landscape</p> <p>AMENITY - Tree group represents a key characteristic of the urban <b>environment</b> and is regarded as a signature of place</p>
61	42	<p>72A Heretaunga Square  74A Heretaunga Square  74C Heretaunga Square  74B Heretaunga Square</p>	<p>Cluster of 21 - 30 trees comprised of beech, rimu, poplar up to approximately 20m located embankment along driveway.</p>	<p>LANDSCAPE - Mature, uncommon, unusual or rare exotic specimens and/or indigenous remnants and tree group maintains a strong natural form which is well established and integrated within the surrounding landscape</p> <p>AMENITY - Tree group represents a key characteristic of the urban <b>environment</b> and is regarded as a signature of place</p>

				ECOLOGY - Tree group canopy dominated by remnant tree(s) and naturally occurring associated vegetation which are native to that <b>environment</b> (i.e. early or pre-human)
62	41 42	27 Gloucester Street 27 Gloucester Street 31 Gloucester Street 21 Chatsworth Road 23A Chatsworth Road 23B Chatsworth Road 23 Chatsworth Road 25 Chatsworth Road 27A Chatsworth Road 27C Chatsworth Road 27 Chatsworth Road	Cluster of over 30 trees comprised of fir, kahikatea, poplar, European beech, kowhai, beech, totara, rimu, up to approximately 22m located internal band along rear <b>boundaries</b> following stream.	LANDSCAPE - Mature, uncommon, unusual or rare exotic specimens and/or indigenous remnants and tree group maintains a strong natural form which is well established and integrated within the surrounding landscape  AMENITY - Tree group represents a key characteristic of the urban <b>environment</b> and is regarded as a signature of place
63	42	53 Chatsworth Road 55 Chatsworth Road 57A Chatsworth Road 57 Chatsworth Road 61A Chatsworth Road 61B Chatsworth Road 61C Chatsworth Road 61D Chatsworth Road 61E Chatsworth Road 61 Chatsworth Road 63 Chatsworth Road 72A Heretaunga Square 72B Heretaunga Square	Cluster of over 30 trees comprised of beech, rimu, oak up to approximately 24m located street frontage extending to rear of houses on embankment and driveway margin.	LANDSCAPE - Mature, uncommon, unusual or rare exotic specimens and/or indigenous remnants and tree group maintains a strong natural form which is well established and integrated within the surrounding landscape  AMENITY - Tree group represents a key characteristic of the urban <b>environment</b> and is regarded as a signature of place  ECOLOGY - Tree group canopy dominated by remnant tree(s) and naturally occurring associated vegetation which are native to that <b>environment</b> (i.e. early or pre-human)
64	42	53B Chatsworth Road 53C Chatsworth Road 57A Chatsworth Road 57 Chatsworth Road 61 Chatsworth Road 72A Heretaunga Square 72B Heretaunga Square 74A Heretaunga Square	Cluster of over 30 trees comprised of totara, poplar, cypress, eucalypt, cedar, oak, liquidambar, rimu, kanuka, fir, kahikatea up to approximately 22m located following driveway and rear garden / <b>property boundaries</b> .	LANDSCAPE - Mature, uncommon, unusual or rare exotic specimens and/or indigenous remnants and tree group maintains a strong natural form which is well established and integrated within the surrounding landscape  AMENITY - Tree group represents a key characteristic of the urban <b>environment</b> and is regarded as a signature of place.
65	42	61A Chatsworth Road 61B Chatsworth Road 61 Chatsworth Road	Cluster of 21 - 30 trees comprised of beech, totara, rimu, hinau, up to approximately	LANDSCAPE - Mature, uncommon, unusual or rare exotic specimens and/or indigenous remnants

		74A Heretaunga Square 74B Heretaunga Square	11m located in rear garden along internal <b>boundary</b> .	AMENITY - Tree group represents a key characteristic of the urban <b>environment</b> and is regarded as a signature of place
66	41	2 Chatsworth Road 4 Chatsworth Road 6A Chatsworth Road 6B Chatsworth Road	Cluster of over 30 trees comprised of beech, eucalypt up to approximately 39m located a steep gully extending between Chatsworth Road and Wi Tako Reserve.	LANDSCAPE - Mature, uncommon, unusual or rare exotic specimens and/or indigenous remnants and a large contiguous tree group or part of a wider indigenous forest group and tree group maintains a strong natural form which is well established and integrated within the surrounding landscape  AMENITY - Tree group represents a key characteristic of the urban <b>environment</b> and is regarded as a signature of place  ECOLOGY - Tree group canopy dominated by remnant tree(s) and naturally occurring associated vegetation which are native to that <b>environment</b> (i.e. early or pre-human)
67	42	74C Heretaunga Square 74E Heretaunga Square 78 Heretaunga Square	Cluster of 4 - 6 trees comprised of rimu, beech, hinau, kowhai, totara up to approximately 14m located in rear garden and following internal <b>boundary</b> .	AMENITY - Tree group represents a key characteristic of the urban <b>environment</b> and is regarded as a signature of place  ECOLOGY - Tree group canopy dominated by remnant tree(s) and naturally occurring associated vegetation which are native to that <b>environment</b> (i.e. early or pre-human)
68	42	61B Chatsworth Road 61C Chatsworth Road 61D Chatsworth Road 61E Chatsworth Road 84 Heretaunga Square 8 Ashdown Way 74C Heretaunga Square 74B Heretaunga Square	Cluster of over 30 trees comprised of beech, rimu, totara, kamahi, kanuka, tree fern up to approximately 20m located set higher along internal <b>boundary</b> and extending onto an elevated spur.	LANDSCAPE - Mature, uncommon, unusual or rare exotic specimens and/or indigenous remnants and tree group maintains a strong natural form which is well established and integrated within the surrounding landscape  AMENITY - Tree group represents a key characteristic of the urban <b>environment</b> and is regarded as a signature of place  ECOLOGY - Tree group canopy dominated by remnant tree(s) and naturally occurring associated vegetation which are native to that <b>environment</b> (i.e. early or pre-human)
69	42	61D Chatsworth Road 61E Chatsworth Road 84 Heretaunga Square	Cluster of 7 - 10 trees comprised of totara, kowhai, kanuka, liquidambar up to approximately 11m located in internal garden and <b>boundary</b> vegetation.	AMENITY - Tree group represents a key characteristic of the urban <b>environment</b> and is regarded as a signature of place
70	42	84 Heretaunga Square 86 Heretaunga Square 88 Heretaunga Square	Cluster of 2 - 3 trees comprised of eucalypt up to approximately 13m located in front garden along driveway.	AMENITY - Tree group represents a key characteristic of the urban <b>environment</b> and is regarded as a signature of place

71	42	84 Heretaunga Square 86 Heretaunga Square 1 Evergreen Crescent	Cluster of 7 - 10 trees comprised of pine, eucalypt, willow up to approximately 18m located set on hill behind houses.	AMENITY - Tree group represents a key characteristic of the urban <b>environment</b> and is regarded as a signature of place
72	42	84 Heretaunga Square 86 Heretaunga Square	Cluster of 4 - 6 trees comprised of beech, oak up to approximately 14m located in rear garden on elevated hill side.	AMENITY - Tree group represents a key characteristic of the urban <b>environment</b> and is regarded as a signature of place
73	42	58A Chatsworth Road 62A Chatsworth Road 68A Chatsworth Road 68B Chatsworth Road 58D Chatsworth Road 58E Chatsworth Road	Grove of 11 - 15 trees comprised of beech (red, black and silver), rimu, miro, lancewood up to approximately 17m located elevated rear gardens.	LANDSCAPE - Mature, uncommon, unusual or rare exotic specimens and/or indigenous remnants and tree group maintains a strong natural form which is well established and integrated within the surrounding landscape  AMENITY - Tree group represents a key characteristic of the urban <b>environment</b> and is regarded as a signature of place  ECOLOGY - Tree group canopy dominated by remnant tree(s) and naturally occurring associated vegetation which are native to that <b>environment</b> (i.e. early or pre-human)
77	41	37 Whitemans Road 39 Whitemans Road 39A Whitemans Road	Cluster of 4 - 6 trees comprised of liquidambar, kowhai, oak up to approximately 11m located in front garden.	AMENITY - Tree group represents a key characteristic of the urban <b>environment</b> and is regarded as a signature of place
78	41	1 Chatsworth Road 43A Whitemans Road 45 Whitemans Road 47 Whitemans Road	Cluster of 11-15 trees comprised of beech, rimu, kowhai, eucalypt up to approximately 19m located in front garden / street frontage on corner of street.	LANDSCAPE - Mature, uncommon, unusual or rare exotic specimens and/or indigenous remnants  AMENITY - District wide significance or landmark and / or highly visible from public areas and tree group represents a key characteristic of the urban <b>environment</b> and is regarded as a signature of place  ECOLOGY - Tree group canopy dominated by remnant tree(s) and naturally occurring associated vegetation which are native to that <b>environment</b> (i.e. early or pre-human)
182	42	32A Chatsworth Road	Cluster of 2 - 3 trees comprised of European beech, magnolia up to approximately 11m located garden specimens.	LANDSCAPE – Tree group maintains a strong natural form which is well established and integrated within the surrounding landscape  AMENITY - Tree group represents a key characteristic of the urban <b>environment</b> and is regarded as a signature of place
197	42	30A Chatsworth Road	Grove of 2-3 trees comprised of rimu up to approximately 11m, located in garden border adjoining driveway.	LANDSCAPE – Tree group maintains a strong natural form which is well established and integrated within the surrounding landscape

				AMENITY - Tree group represents a key characteristic of the urban <b>environment</b> and is regarded as a signature of place
257	41	24A Chatsworth Road 24B Chatsworth Road 24C Chatsworth Road 24D Chatsworth Road	Grove of 2 - 3 trees comprised of oak up to approximately 16m located in rear garden specimens.	LANDSCAPE – Tree group maintains a strong natural form which is well established and integrated within the surrounding landscape  AMENITY - Tree group represents a key characteristic of the urban <b>environment</b> and is regarded as a signature of place
369	42	42 Chatsworth Road 46 Chatsworth Road	Cluster of over 30 trees comprised of beech, rimu, kahikatea up to approximately 21m located in front garden, street frontage established on corner.	LANDSCAPE – Mature, uncommon, unusual or rare exotic specimens and/or indigenous remnants and tree group maintains a strong natural form which is well established and integrated within the surrounding landscape  AMENITY - Tree group represents a key characteristic of the urban <b>environment</b> and is regarded as a signature of place  ECOLOGY - Tree group canopy dominated by remnant tree(s) and naturally occurring associated vegetation which are native to that <b>environment</b> (i.e. early or pre-human)
372	42	61C Chatsworth Road 61D Chatsworth Road	Cluster of 2 - 3 trees comprised of beech, totara up to approximately 10m located in rear garden on edge of escarpment.	AMENITY - Tree group represents a key characteristic of the urban <b>environment</b> and is regarded as a signature of place
397	41	16 Chatsworth Road	Grove of 2 - 3 trees comprised of beech, liquidambar up to approximately 8m located on border of street and front garden.	AMENITY - Tree group represents a key characteristic of the urban <b>environment</b> and is regarded as a signature of place
399	42	58 Chatsworth Road	Cluster of 2 - 3 trees comprised of cypress, liquidambar, spruce up to approximately 14m located on corner; street trees and front garden.	AMENITY - Tree group represents a key characteristic of the urban <b>environment</b> and is regarded as a signature of place
401	42	33 Chatsworth Road 35 Chatsworth Road	Cluster of 4 - 6 trees comprised of rimu, beech up to approximately 9m located in front garden adjacent to driveway.	AMENITY - Tree group represents a key characteristic of the urban <b>environment</b> and is regarded as a signature of place

## CHARACTER AREA: PINEHAVEN

### Pinehaven

The Pinehaven Character Area is located in the Eastern Hills of the Hutt Valley.

Mixed native and exotic vegetation provides a backdrop to Pinehaven. Mid to upper slopes are predominantly covered with plantation pine which dates back to its initial establishment in 1928. The lower slopes and gullies typically contain secondary regenerating native vegetation, particularly where pine trees have been removed. Native vegetation frequently buffers residential development established along the valley floor from the more elevated pine-clad hill slopes. Several remnant native trees have also been retained, particularly along the margins of Pinehaven and Ecclesfield Reserves.

Tributaries in the upper catchment of Pinehaven Stream flow from the surrounding hills and down through residential development adjoining Pinehaven and Elmslie Roads on the valley floor. Mature native and exotic trees have been established along stream margins to create 'green corridors' through residential development.

Several mature native and exotic trees have been established along street frontages and roadside embankments and reinforce an enclosed wooded character throughout this area.

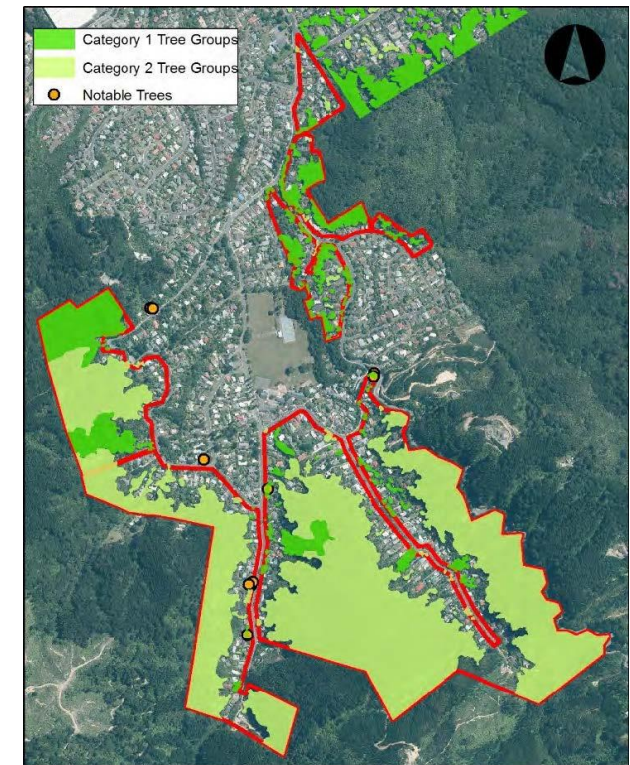
### TREE SPECIES

#### Notable Native Trees (including remnants)

Red Beech (*Nothofagus fusca*)  
Black Beech (*Fuscospora solandri*)  
Rimu (*Dacrydium cupressinum*) Kahikatea (*Dacrycarpus dacrydioides*)  
Totara (*Podocarpus totara*) Kamahi (*Weinmannia racemosa*)  
Rewarewa (*Knightia excelsa*) Kanuka (*Kunzea ericoides*)  
Hinau (*Elaeocarpus dentatus*) Northern Rata (*Metrosideros robusta*)  
Cabbage tree (*Cordyline australis*) Kowhai (*Sophora* spp.)  
Tree fern (*Cyathea medullaris*, *Dicksonia squarrosa*) Tree Fuchsia (*Fuchsia excorticata*)  
Pate (*Schefflera digitata*) Toro (*Myrsine salicina*)  
Lancewood (*Pseudopanax crassifolius*) Five finger (*Pseudopanax arboreus*)  
Tawa (*Beilschmiedia tawa*) Wineberry (*Aristotelia serrata*)  
Putaputaweta (*Carpodetus serratus*) Tree daisy (*Olearia* spp.)

#### Notable Exotic Trees

Giant Redwood (*Sequoiadendron giganteum*) Liquidambar (*Liquidambar styraciflua*)  
Cypress (*Cupressus* spp.) Cedar (*Cedrus* spp.)  
Poplar (*Populus* spp.) Birch (*Betula* spp.)  
Oak (*Quercus* spp.) Ash (*Fraxinus* spp.)  
English beech (*Fagus sylvatica*) Tulip tree (*Liriodendron tulipifera*)



Elm (*Ulmus* spp.) Copper beech (*Fagus sylvatica* 'Purpurea')

Juniper (*Juniperus* spp.) Gum (*Eucalyptus* spp.)

Exotic **forestry** / wilding species

Pine (*Pinus radiata*)

**THREATS**

- Wholesale clearing or removal of vegetation
- Selective removal of specimens for timber or firewood
- Indiscriminate pruning / topping
- Removal of diverse under-storey
- Compaction within the tree drip zone
- Inappropriate siting of **structures** / utilities
- Damage from pest plants or animals

**Character Area Pinehaven – Urban Tree Groups**

No	Map Ref	Location	Tree Group Description	High Values
79	41	3 Blue Mountains Road 1 Blue Mountains Road	Cluster of 2 - 3 trees comprised of cypress, red beech, liquidambar up to approximately 12m located on street front, overhanging <b>property and road.</b>	AMENITY - Tree group represents a key characteristic of the urban <b>environment</b> and is regarded as a signature of place
80	41	11 Blue Mountains Road 7 Blue Mountains Road 9 Blue Mountains Road	Cluster of 2 - 3 trees comprised of liquidambar, kahikatea up to approximately 11m located in front garden.	AMENITY - Tree group represents a key characteristic of the urban <b>environment</b> and is regarded as a signature of place
82	41	17A Blue Mountains Road 17B Blue Mountains Road 17 Blue Mountains Road 19 Blue Mountains Road 27 Blue Mountains Road 29Blue Mountains Road	Cluster of 7 - 10 trees comprised of wattle, poplar, oak, beech up to approximately 11m located on rear internal <b>boundary.</b>	AMENITY - Tree group represents a key characteristic of the urban <b>environment</b> and is regarded as a signature of place
83	41	29 Blue Mountains Road 29A Blue Mountains Road 31 Blue Mountains Road	Cluster of over 30 trees comprised of manuka, beech up to approximately 17m located in rear garden hill slope on edge of Ecclesfield Reserve.	LANDSCAPE - Mature, uncommon, unusual or rare exotic specimens and/or indigenous remnants and a large contiguous tree group or part of a wider indigenous forest group and tree group maintains a strong natural form which is well established and integrated within the surrounding landscape



				<p>AMENITY - Tree group represents a key characteristic of the urban <b>environment</b> and is regarded as a signature of place</p> <p>ECOLOGY - Tree group canopy dominated by remnant tree(s) and naturally occurring associated vegetation which are native to that <b>environment</b> (i.e. early or pre-human)</p>
84	46	33 Blue Mountains Road	Cluster of 2 - 3 trees comprised of beech, totara up to approximately 11m located Elevated rear bank	<p>AMENITY - Tree group represents a key characteristic of the urban <b>environment</b> and is regarded as a signature of place</p>
85	46	37 Blue Mountains Road 39 Blue Mountains Road	Cluster of 11 - 15 trees comprised of manuka, beech, rimu, oak up to approximately 13m located high on bank above <b>road</b> .	<p>AMENITY - Tree group represents a key characteristic of the urban <b>environment</b> and is regarded as a signature of place</p> <p>ECOLOGY - Tree group canopy dominated by remnant tree(s) and naturally occurring associated vegetation which are native to that <b>environment</b> (i.e. early or pre-human)</p>
86	46	41 Blue Mountains Road 49 Blue Mountains Road 39 Blue Mountains Road	Cluster of over 30 trees comprised of beech, rimu, toro, kamahi, cabbage tree up to approximately 21m located backing onto reserve, steep bank to rear of <b>Residential Units</b> .	<p>LANDSCAPE - Mature, uncommon, unusual or rare exotic specimens and/or indigenous remnants and a large contiguous tree group or part of a wider indigenous forest group and tree group maintains a strong natural form which is well established and integrated within the surrounding landscape</p> <p>AMENITY - Tree group represents a key characteristic of the urban <b>environment</b> and is regarded as a signature of place</p> <p>ECOLOGY - Tree group canopy dominated by remnant tree(s) and naturally occurring associated vegetation which are native to that <b>environment</b> (i.e. early or pre-human)</p>
87	46	39 Blue Mountains Road 41 Blue Mountains Road 45 Blue Mountains Road 39 Blue Mountains Road 49 Blue Mountains Road 53 Blue Mountains Road	Grove of over 30 trees comprised of beech, kanuka up to approximately 20m located along top of bank adjoining <b>road</b> edge.	<p>LANDSCAPE - Mature, uncommon, unusual or rare exotic specimens and/or indigenous remnants and tree group maintains a strong natural form which is well established and integrated within the surrounding landscape</p> <p>AMENITY - District wide significance or landmark and / or highly visible from public areas and tree group represents a key characteristic of the urban <b>environment</b> and is regarded as a signature of place</p> <p>ECOLOGY - Tree group canopy dominated by remnant tree(s) and naturally occurring associated vegetation which are native to that <b>environment</b> (i.e. early or pre-human)</p>

88	46	49 Blue Mountains Road 7 Fendalton Crescent 53 Blue Mountains Road 57 Blue Mountains Road 59 Blue Mountains Road 61 Blue Mountains Road 11 Fendalton Crescent 3 Fendalton Crescent 5 Fendalton Crescent 13 Fendalton Crescent	Cluster of over 30 trees comprised of beech, kamihi, lancewood, rimu up to approximately 18m located at rear of <b>Residential Units</b> on steep bank.	<p>LANDSCAPE - Mature, uncommon, unusual or rare exotic specimens and/or indigenous remnants and a large contiguous tree group or part of a wider indigenous forest group and tree group maintains a strong natural form which is well established and integrated within the surrounding landscape</p> <p>AMENITY - Tree group represents a key characteristic of the urban <b>environment</b> and is regarded as a signature of place</p> <p>ECOLOGY - Tree group canopy dominated by remnant tree(s) and naturally occurring associated vegetation which are native to that <b>environment</b> (i.e. early or pre-human) and natural structure of tree group is largely intact, a contiguous canopy, sub-canopy tiers and epiphytes present</p>
89	46	53 Blue Mountains Road 57 Blue Mountains Road	Cluster of 4 - 6 trees comprised of European beech, kowhai up to approximately 10m located in front garden, street frontage.	<p>AMENITY - Tree group represents a key characteristic of the urban <b>environment</b> and is regarded as a signature of place</p>
90	46	23 Fendalton Crescent 25 Fendalton Crescent 27 Fendalton Crescent 29 Fendalton Crescent	Grove of 11 - 15 trees comprised of beech up to approximately 16m located predominantly to rear of <b>Residential Units</b> on steep bank.	<p>LANDSCAPE - Mature, uncommon, unusual or rare exotic specimens and/or indigenous remnants and a large contiguous tree group or part of a wider indigenous forest group and tree group maintains a strong natural form which is well established and integrated within the surrounding landscape</p> <p>AMENITY - Tree group represents a key characteristic of the urban <b>environment</b> and is regarded as a signature of place</p> <p>ECOLOGY - Tree group canopy dominated by remnant tree(s) and naturally occurring associated vegetation which are native to that <b>environment</b> (i.e. early or pre-human)</p>
91	46	31 Fendalton Crescent 33 Fendalton Crescent 35 Fendalton Crescent	Grove of 4 - 6 trees comprised of beech up to approximately 17m located along sloping internal <b>boundary</b> .	<p>LANDSCAPE - Mature, uncommon, unusual or rare exotic specimens and/or indigenous remnants and tree group maintains a strong natural form which is well established and integrated within the surrounding landscape</p> <p>AMENITY - Tree group represents a key characteristic of the urban <b>environment</b> and is regarded as a signature of place</p> <p>ECOLOGY - Tree group canopy dominated by remnant tree(s) and naturally occurring associated vegetation which are native to that <b>environment</b> (i.e. early or pre-human)</p>

92	46	84 Blue Mountains Road 86 Blue Mountains Road	Grove of 7 - 10 trees comprised of beech, oak up to approximately 12m located street frontage adjacent to access entrance.	AMENITY - Tree group represents a key characteristic of the urban <b>environment</b> and is regarded as a signature of place  ECOLOGY - Tree group canopy dominated by remnant tree(s) and naturally occurring associated vegetation which are native to that <b>environment</b> (i.e. early or pre-human)
93	46	18 Freemans Way 10 Freemans Way 12 Freemans Way 14 Freemans Way 16 Freemans Way 20 Freemans Way 22 Freemans Way 24 Freemans Way 26 Freemans Way 80 Blue Mountains Road 82 Blue Mountains Road 84 Blue Mountains Road 86 Blue Mountains Road	Cluster of over 30 trees comprised of beech, rimu, kahikatea, rewarewa, kamahi, hinau up to approximately 23m located sloping rear garden adjacent Pinehaven Reserve.	LANDSCAPE - Mature, uncommon, unusual or rare exotic specimens and/or indigenous remnants and a large contiguous tree group or part of a wider indigenous forest group and tree group maintains a strong natural form which is well established and integrated within the surrounding landscape  AMENITY - District wide significance or landmark and / or highly visible from public areas and tree group represents a key characteristic of the urban <b>environment</b> and is regarded as a signature of place  ECOLOGY - Tree group canopy dominated by remnant tree(s) and naturally occurring associated vegetation which are native to that <b>environment</b> (i.e. early or pre-human)
94	46	78 Blue Mountains Road 20 Freemans Way 22 Freemans Way 24 Freemans Way 26 Freemans Way 80 Blue Mountains Road	Cluster of 2 - 3 trees comprised of rimu, copper beech, liquidambar up to approximately 13m located in rear garden - specimens.	AMENITY - Tree group represents a key characteristic of the urban <b>environment</b> and is regarded as a signature of place
95	46	78 Blue Mountains Road 74 Blue Mountains Road 76 Blue Mountains Road 80 Blue Mountains Road 82 Blue Mountains Road	Cluster of 7 - 10 trees comprised of beech, pine, cypress, rimu up to approximately 14m located along top of bank adjoining <b>road</b> frontage.	AMENITY - District wide significance or landmark and / or highly visible from public areas and tree group represents a key characteristic of the urban <b>environment</b> and is regarded as a signature of place
96	46	11 Freemans Way 70 Blue Mountains Road 72 Blue Mountains Road	Cluster of 11 - 15 trees comprised of fir, cypress, oak, poplar, pine, ash up to approximately 22m located along top of bank adjoining <b>road</b> frontage.	AMENITY - District wide significance or landmark and / or highly visible from public areas and tree group represents a key characteristic of the urban <b>environment</b> and is regarded as a signature of place
97	46	11 Freemans Way 70 Blue Mountains Road	Cluster of 11 - 15 trees comprised of oak up to approximately 15m located in rear garden - specimen trees.	AMENITY - Tree group represents a key characteristic of the urban <b>environment</b> and is regarded as a signature of place

98	46	18 Freemans Way 11 Freemans Way 19 Freemans Way 59 Blue Mountains Road 61 Blue Mountains Road 9 Freemans Way 70 Blue Mountains Road	Cluster of over 30 trees comprised of beech, rimu, kamihi, kahikatea, toro, eucalypt, maple, liquidambar, oak, European beech, kowhai, dawn redwood up to approximately 23m located forested garden, remnant specimen mixed stretching out to border <b>property</b> street fronts.	LANDSCAPE - Mature, uncommon, unusual or rare exotic specimens and/or indigenous remnants and tree group maintains a strong natural form which is well established and integrated within the surrounding landscape  AMENITY - Tree group represents a key characteristic of the urban <b>environment</b> and is regarded as a signature of place  ECOLOGY - Tree group canopy dominated by remnant tree(s) and naturally occurring associated vegetation which are native to that <b>environment</b> (i.e. early or pre-human)
99	46	11 Birch Grove 12 Birch Grove 10B Birch Grove 50 Blue Mountains Road 9 Birch Grove 10 Freemans Way 4 Freemans Way 6 Freemans Way 8 Freemans Way 10C Birch Grove	Grove of over 30 trees comprised of beech up to approximately 18m located in rear garden canopy back drop.	LANDSCAPE - Mature, uncommon, unusual or rare exotic specimens and/or indigenous remnants and tree group maintains a strong natural\ form which is well established and integrated within the surrounding landscape  AMENITY - Tree group represents a key characteristic of the urban <b>environment</b> and is regarded as a signature of place  ECOLOGY - Tree group canopy dominated by remnant tree(s) and naturally occurring associated vegetation which are native to that <b>environment</b> (i.e. early or pre-human)
101	46	50 Blue Mountains Road Lot 3 DP 31536	Cluster of over 30 trees comprised of cypress, totara, hoheria, poplar, maple, fir, kahikatea, liquidambar, elm, magnolia, copper beech, tulip tree, oak, birch, kowhai up to approximately 16m located in front garden adjoining <b>road</b> edge	LANDSCAPE - Tree group maintains a strong natural form which is well established and integrated within the surrounding landscape  AMENITY - Tree group represents a key characteristic of the urban <b>environment</b> and is regarded as a signature of place
102	46	1 Pinehaven Road 48 Blue Mountains Road	Cluster of 7 - 10 trees comprised of oak, beech up to approximately 14m located in front corner entrance to Pinehaven and Whitemans Valley along stream margin.	LANDSCAPE - Mature, uncommon, unusual or rare exotic specimens and/or indigenous remnants and tree group maintains a strong natural form which is well established and integrated within the surrounding landscape  AMENITY - District wide significance or landmark and / or highly visible from public areas and tree group represents a key characteristic of the urban <b>environment</b> and is regarded as a signature of place
103	46	98 Blue Mountains Road 36 Forest Road	Cluster of 2 - 3 trees comprised of cedar up to approximately 15m located adjacent to <b>road</b> .	AMENITY - Tree group represents a key characteristic of the urban <b>environment</b> and is regarded as a signature of place

104	46	98 Blue Mountains Road 36 Forest Road	Cluster of 2 - 3 trees comprised of beech, hinau up to approximately 14m located a gully along <b>road</b> edge.	<p>LANDSCAPE - Mature, uncommon, unusual or rare exotic specimens and/or indigenous remnants</p> <p>AMENITY - Tree group represents a key characteristic of the urban <b>environment</b> and is regarded as a signature of place</p> <p>ECOLOGY - Tree group canopy dominated by remnant tree(s) and naturally occurring associated vegetation which are native to that <b>environment</b> (i.e. early or pre-human)</p>
105	46	102 Blue Mountains Road 104 Blue Mountains Road	Grove of 2 - 3 trees comprised of beech up to approximately 10m located atop of bank front of <b>property</b> .	<p>LANDSCAPE - Mature, uncommon, unusual or rare exotic specimens] and/or indigenous remnants</p> <p>AMENITY - Tree group represents a key characteristic of the urban <b>environment</b> and is regarded as a signature of place</p> <p>ECOLOGY - Tree group canopy dominated by remnant tree(s) and naturally occurring associated vegetation which are native to that <b>environment</b> (i.e. early or pre-human)</p>
107	46	106 Blue Mountains Road 108 Blue Mountains Road	Cluster of 4 - 6 trees comprised of totara, kowhai, liquidambar up to approximately 13m located bank on street frontage.	<p>LANDSCAPE - Mature, uncommon, unusual or rare exotic specimens and/or indigenous remnants</p> <p>AMENITY - Tree group represents a key characteristic of the urban <b>environment</b> and is regarded as a signature of place</p>
108	46	26 Forest Road 28 Forest Road 3 Elmslie Road	Cluster of 7 - 10 trees comprised of cypress, kowhai, totara, walnut, silver birch, bay tree up to approximately 12m located on driveway bank, street frontage.	<p>LANDSCAPE - Tree group maintains a strong natural form which is well established and integrated within the surrounding landscape</p> <p>AMENITY - Tree group represents a key characteristic of the urban <b>environment</b> and is regarded as a signature of place</p>
110	46	13 Elmslie Road 15 Elmslie Road 11 Elmslie Road 7 Elmslie Road 9 Elmslie Road	Cluster of 4 - 6 trees comprised of totara, kowhai, liquidambar, cypress up to approximately 16m located in front garden following stream edge through <b>properties</b> .	<p>LANDSCAPE - Mature, uncommon, unusual or rare exotic specimens and/or indigenous remnants and tree group maintains a strong natural form which is well established and integrated within the surrounding landscape</p> <p>AMENITY - Tree group represents a key characteristic of the urban <b>environment</b> and is regarded as a signature of place</p>
111	46	15 Elmslie Road 17 Elmslie Road	Cluster of 4 - 6 trees comprised of birch, juniper, oak, kauri up to approximately 11m located in front garden on lawn.	<p>LANDSCAPE - Tree group maintains a strong natural form which is well established and integrated within the surrounding landscape</p>

				AMENITY - Tree group represents a key characteristic of the urban <b>environment</b> and is regarded as a signature of place
112	46	17 Elmslie Road 21A Elmslie Road 21 Elmslie Road 23 Elmslie Road 25 Elmslie Road 27 Elmslie Road 128 Blue Mountains Road 140 Blue Mountains Road 19 Elmslie Road	Cluster of 16 - 20 trees comprised of kowhai, totara, beech, rata, oak, cedar up to approximately 13m located in rear gardens along stream <b>boundary</b> .	LANDSCAPE - Mature, uncommon, unusual or rare exotic specimens and/or indigenous remnants and tree group maintains a strong natural form which is well established and integrated within the surrounding landscape  AMENITY - Tree group represents a key characteristic of the urban <b>environment</b> and is regarded as a signature of place  ECOLOGY - Tree group canopy dominated by remnant tree(s) and naturally occurring associated vegetation which are native to that <b>environment</b> (i.e. early or pre-human)
113	46	17 Elmslie Road 21A Elmslie Road 21 Elmslie Road 23 Elmslie Road 25 Elmslie Road 27 Elmslie Road 128 Blue Mountains Road 140 Blue Mountains Road 19 Elmslie Road	Cluster of 16 - 20 trees comprised of kowhai, totara, beech, rata, oak, cedar up to approximately 13m located in rear gardens along stream <b>boundary</b> .	LANDSCAPE - Mature, uncommon, unusual or rare exotic specimens and/or indigenous remnants and tree group maintains a strong natural form which is well established and integrated within the surrounding landscape  AMENITY - Tree group represents a key characteristic of the urban <b>environment</b> and is regarded as a signature of place  ECOLOGY - Tree group canopy dominated by remnant tree(s) and naturally occurring associated vegetation which are native to that <b>environment</b> (i.e. early or pre-human)
116	46	51 Elmslie Road 53 Elmslie Road 55 Elmslie Road 57 Elmslie Road	Cluster of 11 - 15 trees comprised of rimu, beech, kowhai up to approximately 19m located in front garden and stream <b>boundary</b> .	LANDSCAPE - Mature, uncommon, unusual or rare exotic specimens and/or indigenous remnants and tree group maintains a strong natural form which is well established and integrated within the surrounding landscape  AMENITY - Tree group represents a key characteristic of the urban <b>environment</b> and is regarded as a signature of place  ECOLOGY - Tree group canopy dominated by remnant tree(s) and naturally occurring associated vegetation which are native to that <b>environment</b> (i.e. early or pre-human)
117	47 49	57 Elmslie Road 59 Elmslie Road 61 Elmslie Road 63 Elmslie Road	Cluster of 7 - 10 trees comprised of totara, kanuka, rewarewa, rimu, beech, cypress up to approximately 14m located in front garden, stream edge.	LANDSCAPE - Mature, uncommon, unusual or rare exotic specimens and/or indigenous remnants  AMENITY - Tree group represents a key characteristic of the urban <b>environment</b> and is regarded as a signature of place

				ECOLOGY - Tree group canopy dominated by remnant tree(s) and naturally occurring associated vegetation which are native to that <b>environment</b> (i.e.early or pre-human)
123	46	2 Freemans Way	Cluster of 7 - 10 trees comprised of Larch, silver birch, kowhai upto approximately 13m located in front garden, bordering Freemans Way.	AMENITY - Tree group represents a key characteristic of the urban <b>environment</b> and is regarded as a signature of place
153	46	78 Blue Mountains Road 11 Freemans Way 19 Freemans Way 74 Blue Mountains Road	Grove of 4 - 6 trees comprised of black beech, rimu up to approximately 13m located in rear garden and <b>boundary</b> specimens.	LANDSCAPE - Mature, uncommon, unusual or rare exotic specimens and/or indigenous remnants and tree group maintains a strong natural form which is well established and integrated within the surrounding landscape.  AMENITY - Tree group represents a key characteristic of the urban <b>environment</b> and is regarded as a signature of place.  ECOLOGY - Tree group canopy dominated by remnant tree(s) and naturally occurring associated vegetation which are native to that <b>environment</b> (i.e. early or pre-human)
293	45 46 48	99 Elmslie Road 104 Wyndham Road 106B Wyndham Road 106C Wyndham Road 108 Wyndham Road 112 Wyndham Road 114 Wyndham Road 116 Wyndham Road 118 Wyndham Road 120A Wyndham Road 120 Wyndham Road 128 Wyndham Road 130 Wyndham Road 116A Wyndham Road 102 Wyndham Road 110 Wyndham Road 108A Wyndham Road 108B Wyndham Road 100 Pinehaven Road 102 Pinehaven Road 104 Pinehaven Road	Cluster of over 30 trees comprised of kamihi, rewarewa, tree fern, beech, rimu, kanuka, kowhai, hinau, beech, tree fuchsia, cabbage tree up to approximately 40m located as a vegetated backdrop to west of Pinehaven.	AMENITY - Tree group represents a key characteristic of the urban <b>environment</b> and is regarded as a signature of place

		106 Pinehaven Road 134 Wyndham Road 136 Wyndham Road 42 Jocelyn Crescent 44 Jocelyn Crescent 46 Jocelyn Crescent 48 Jocelyn Crescent 52 Jocelyn Crescent 54 Jocelyn Crescent 58 Jocelyn Crescent 94 Pinehaven Road 96 Pinehaven Road 98 Pinehaven Road 110A Pinehaven Road 112A Pinehaven Road 114 Pinehaven Road 120 Pinehaven Road 122 Pinehaven Road 124 Pinehaven Road 126 Pinehaven Road 128 Pinehaven Road 130 Pinehaven Road 132 Pinehaven Road 134 Pinehaven Road 136A Pinehaven Road 138 Pinehaven Road 140 Pinehaven Road 142 Pinehaven Road 146 Pinehaven Road 148 Pinehaven Road 116A Pinehaven Road 108A Pinehaven Road 116 Pinehaven Road		
296	48	173 Pinehaven Road 169 Pinehaven Road	Cluster of 16 - 20 trees comprised of beech, totara, rewarewa, kamahi, kowhai, kanuka, tanekaha, rimu, tree fern, tree fuchsia up to approximately 23m located as a vegetated backdrop at Southern end of Pinehaven Road.	LANDSCAPE - Mature, uncommon, unusual or rare exotic specimens and/or indigenous remnants and tree group maintains a strong natural form which is well established and integrated within the surrounding landscape  AMENITY - Tree group represents a key characteristic of the urban <b>environment</b> and is regarded as a signature of place



307	46	54 Jocelyn Crescent 56 Jocelyn Crescent	Cluster of 2 - 3 trees comprised of oak, kowhai up to approximately 15m located an oak in front of house on driveway. Set up from street on bank.	AMENITY - Tree group represents a key characteristic of the urban <b>environment</b> and is regarded as a signature of place
308	46	94 Pinehaven Road 96 Pinehaven Road	Grove of 2 - 3 trees comprised of kahikatea up to approximately 16m located in front garden and street frontage.	LANDSCAPE - Tree group maintains a strong natural form which is well established and integrated within the surrounding landscape  AMENITY - Tree group represents a key characteristic of the urban <b>environment</b> and is regarded as a signature of place  ECOLOGY - Tree group canopy dominated by remnant tree(s) and naturally occurring associated vegetation which are native to that <b>environment</b> (i.e. early or pre-human)
311	48	120 Pinehaven Road 116A Pinehaven Road 116 Pinehaven Road	Cluster of 11 - 15 trees comprised of cabbage tree, kamahi, kowhai up to approximately 12m located in front garden / street frontage.	AMENITY - Tree group represents a key characteristic of the urban <b>environment</b> and is regarded as a signature of place
312	48	122 Pinehaven Road 124 Pinehaven Road	Cluster of 7 - 10 trees comprised of tree fern, kowhai, kamahi, cabbage tree, rimu, lancewood up to approximately 11m located a line of trees.	AMENITY - Tree group represents a key characteristic of the urban <b>environment</b> and is regarded as a signature of place
313	48	128 Pinehaven Road 126 Pinehaven Road	Grove of 4 - 6 trees comprised of kahikatea up to approximately 12m located at back from street in front garden along stream.	LANDSCAPE - Mature, uncommon, unusual or rare exotic specimens and/or indigenous remnants and tree group maintains a strong natural form which is well established and integrated within the surrounding landscape  AMENITY - Tree group represents a key characteristic of the urban <b>environment</b> and is regarded as a signature of place  ECOLOGY - Tree group canopy dominated by remnant tree(s) and naturally occurring associated vegetation which are native to that <b>environment</b> (i.e. early or pre-human)
314	48	132 Pinehaven Road 134 Pinehaven Road	Cluster of trees comprised of rewarewa, kamihi up to approximately 11m located – garden vegetation back from street.	AMENITY - Tree group represents a key characteristic of the urban <b>environment</b> and is regarded as a signature of place
317	48	140 Pinehaven Road 142 Pinehaven Road 144 Pinehaven Road	Cluster of 4 - 6 trees comprised of kowhai, totara, beech up to approximately 11m	LANDSCAPE - Mature, uncommon, unusual or rare exotic specimens and/or indigenous remnants

			located on street frontage, along stream margin.	AMENITY - Tree group represents a key characteristic of the urban <b>environment</b> and is regarded as a signature of place  ECOLOGY - Tree group canopy dominated by remnant tree(s) and naturally occurring associated vegetation which are native to that <b>environment</b> (i.e.early or pre-human)
318	46	91 Pinehaven Road	Cluster of 2 - 3 trees comprised of liquidambar, oak up to approximately 13m located on corner street front.	AMENITY - District wide significance or landmark and / or highly visible from public areas
319	46	101 Pinehaven Road 103 Pinehaven Road	Grove of 7 - 10 trees comprised of oak, kamahi, beech up to approximately 15m located in rear garden on toe slope.	LANDSCAPE - Tree group maintains a strong natural form which is well established and integrated within the surrounding landscape  AMENITY - Tree group represents a key characteristic of the urban <b>environment</b> and is regarded as a signature of place
320	46	122 Wyndham Road 124 Wyndham Road	Cluster of 4 - 6 trees comprised of Juniper, kowhai, up to approximately 14m located in rear garden.	LANDSCAPE - Tree group maintains a strong natural form which is well established and integrated within the surrounding landscape  AMENITY - Tree group represents a key characteristic of the urban <b>environment</b> and is regarded as a signature of place
321	49	70 Elmslie Road 72 Elmslie Road 74 Elmslie Road	Cluster of 16 - 20 trees comprised of oak, cedar, kanuka, lilly pilly up to approximately 13m located in front garden, street verge on lawn bank with no footpath.	AMENITY - Tree group represents a key characteristic of the urban <b>environment</b> and is regarded as a signature of place
322	49	66A Elmslie Road	Grove of 4 - 6 trees comprised of rimu, up to approximately 12m located in rear garden.	AMENITY - Tree group represents a key characteristic of the urban <b>environment</b> and is regarded as a signature of place
323	47	56 Elmslie Road 58 Elmslie Road 60 Elmslie Road	Cluster of 4 - 6 trees comprised of cedar, oak, beech, kanuka up to approximately 13m located in front garden above embankment.	AMENITY - Tree group represents a key characteristic of the urban <b>environment</b> and is regarded as a signature of place
324	46	46 Elmslie Road 48 Elmslie Road	Cluster of 4 - 6 trees comprised of birch, oak, cedar, manuka, holly up to approximately 13m located on street frontage.	AMENITY - Tree group represents a key characteristic of the urban <b>environment</b> and is regarded as a signature of place
326		48 Elmslie Road 50 Elmslie Road	Cluster of 7 - 10 trees comprised of totara, kamihi, tree fern up to approximately 9m located in rear garden.	AMENITY - Tree group represents a key characteristic of the urban <b>environment</b> and is regarded as a signature of place

329		32 Elmslie Road 34 Elmslie Road	Cluster of trees comprised of Kowhai, kanuka up to approximately 10m located in rear / internal <b>boundary</b> .	AMENITY - Tree group represents a key characteristic of the urban <b>environment</b> and is regarded as a signature of place
331		26 Elmslie Road 28 Elmslie Road	Cluster of 2 - 3 trees comprised of totara, rimu up to approximately 11m located at rear of <b>property</b> .	AMENITY - Tree group represents a key characteristic of the urban <b>environment</b> and is regarded as a signature of place  ECOLOGY - Tree group canopy dominated by remnant tree(s) and naturally occurring associated vegetation which are native to that <b>environment</b> (i.e. early or pre-human)
334	46	2 Elmslie Road 6A Elmslie Road 4 Elmslie Road	Grove of 2 - 3 trees comprised of redwood up to approximately 24m located Internal <b>boundaries</b> , rear garden.	LANDSCAPE - Tree group maintains a strong natural form which is well established and integrated within the surrounding landscape  AMENITY - Tree group represents a key characteristic of the urban <b>environment</b> and is regarded as a signature of place
337	46	16 Forest Road 18A Forest Road 18 Forest Road 20 Forest Road 22 Forest Road	Cluster of 4 - 6 trees comprised of beech, oak, eucalypt, kowhai up to approximately 17m located in front garden.	AMENITY - Tree group represents a key characteristic of the urban <b>environment</b> and is regarded as a signature of place
342	46	4 Forest Road 91 Pinehaven Road 93 Pinehaven Road 95 Pinehaven Road	Cluster of 21 - 30 trees comprised of oak, liquidambar, eucalypt, cedar, kanuka, beech, kamahi up to approximately 15m located on scarp extending through rear gardens	LANDSCAPE - Tree group maintains a strong natural form which is well established and integrated within the surrounding landscape  AMENITY - Tree group represents a key characteristic of the urban <b>environment</b> and is regarded as a signature of place
343	46	111 Pinehaven Road 105 Pinehaven Road 107 Pinehaven Road 111A Pinehaven Road	Cluster of 7 - 10 trees comprised of tulip tree, totara, rimu, silver birch, elm, beech up to approximately 16m located in front garden along stream edge	AMENITY - Tree group represents a key characteristic of the urban <b>environment</b> and is regarded as a signature of place
344	46	111 Pinehaven Road 113 Pinehaven Road	Cluster of 2 - 3 trees comprised of rimu, totara up to approximately 12m located in rear garden, base of hill.	LANDSCAPE - Mature, uncommon, unusual or rare exotic specimens and/or indigenous remnants  AMENITY - Tree group represents a key characteristic of the urban <b>environment</b> and is regarded as a signature of place

				ECOLOGY - Tree group canopy dominated by remnant tree(s) and naturally occurring associated vegetation which are native to that <b>environment</b> (i.e. early or pre-human)
345	46	117 Pinehaven Road 115 Pinehaven Road 121 Pinehaven Road 123 Pinehaven Road 125 Pinehaven Road	Cluster of 11 - 15 trees comprised of kowhai, totara, rimu, kahikatea, rewarewa, hinau, lancewood, nikau, tulip tree, maple up to approximately 12m located in front garden following stream margin	LANDSCAPE - Mature, uncommon, unusual or rare exotic specimens and/or indigenous remnants and tree group maintains a strong natural form which is well established and integrated within the surrounding landscape  AMENITY - Tree group represents a key characteristic of the urban <b>environment</b> and is regarded as a signature of place  ECOLOGY - Tree group canopy dominated by remnant tree(s) and naturally occurring associated vegetation which are native to that <b>environment</b> (i.e. early or pre-human)
346	46	127 Pinehaven Road 133 Pinehaven Road 129 Pinehaven Road 131 Pinehaven Road	Cluster of 7 - 10 trees comprised of eucalypt, kahikatea, kowhai, rewarewa up to approximately 22m located in front garden, street frontage along stream margin.	LANDSCAPE - Mature, uncommon, unusual or rare exotic specimens and/or indigenous remnants and tree group maintains a strong natural form which is well established and integrated within the surrounding landscape  AMENITY - Tree group represents a key characteristic of the urban <b>environment</b> and is regarded as a signature of place
349	48	147 Pinehaven Road	Cluster of 4 - 6 trees comprised of kowhai, cabbage tree up to approximately 9m located in front garden, street frontage.	AMENITY - Tree group represents a key characteristic of the urban <b>environment</b> and is regarded as a signature of place
352	45	68 Wyndham Road 70 Wyndham Road	Cluster of 4 - 6 trees comprised of redwood, poplar, kowhai up to approximately 11m located on <b>road</b> bank, surrounding <b>Residential Unit</b> .	AMENITY - Tree group represents a key characteristic of the urban <b>environment</b> and is regarded as a signature of place
357	45	42 Wyndham Road 52 Wyndham Road 58 Wyndham Road 50 Wyndham Road 30A Duncraig Street 38 Wyndham Road 40 Wyndham Road	Cluster of over 30 trees comprised of kamihi, rimu, beech, rewarewa, hinau, tawa up to approximately 39m located on spur and backdrop slopes.	LANDSCAPE – Mature, uncommon, unusual or rare exotic specimens and/or indigenous remnants and a large contiguous tree group or part of a wider indigenous forest group  AMENITY - Tree group represents a key characteristic of the urban <b>environment</b> and is regarded as a signature of place
358	45	52 Wyndham Road 50 Wyndham Road	Cluster of 4 - 6 trees comprised of rewarewa up to approximately 14m located in front garden / street frontage.	LANDSCAPE – Mature, uncommon, unusual or rare exotic specimens and/or indigenous remnants

				<p>AMENITY - Tree group represents a key characteristic of the urban <b>environment</b> and is regarded as a signature of place</p> <p>ECOLOGY - Tree group canopy dominated by remnant tree(s) and naturally occurring associated vegetation which are native to that <b>environment</b> (i.e. early or pre-human)</p>
363	45	<p>52 Wyndham Road 58 Wyndham Road 60 Wyndham Road 62 Wyndham Road 64 Wyndham Road 66 Wyndham Road 68 Wyndham Road 78 Wyndham Road 80 Wyndham Road 82 Wyndham Road 84 Wyndham Road 86 Wyndham Road 88 Wyndham Road 102 Wyndham Road</p>	<p>Cluster of over 30 trees comprised of red beech, black beech, kamahi, rewarewa up to approximately 10m located as a vegetated backdrop to west of Wyndham Road.</p>	<p>AMENITY - Tree group represents a key characteristic of the urban <b>environment</b> and is regarded as a signature of place</p>
366	45	<p>104 Wyndham Road 86 Wyndham Road 88 Wyndham Road 90 Wyndham Road 94 Wyndham Road 102 Wyndham Road</p>	<p>Cluster of over 30 trees comprised of beech, kamihi, rimu up to approximately 35m located on elevated rear toe slopes.</p>	<p>LANDSCAPE – Mature, uncommon, unusual or rare exotic specimens and/or indigenous remnants and a large contiguous tree group or part of a wider indigenous forest group and tree group maintains a strong natural form which is well established and integrated within the surrounding landscape</p> <p>AMENITY - Tree group represents a key characteristic of the urban <b>environment</b> and is regarded as a signature of place</p> <p>ECOLOGY - Tree group canopy dominated by remnant tree(s) and naturally occurring associated vegetation which are native to that <b>environment</b> (i.e. early or pre-human)</p>
384	46 48 49	<p>139 Pinehaven Road 117 Pinehaven Road 127 Pinehaven Road 99 Pinehaven Road 133 Pinehaven Road 143A Pinehaven Road 26 Elmslie Road 2 Elmslie Road</p>	<p>Cluster of over 30 trees comprised of beech, totara, rewarewa, kamahi, kowhai, kanuka, tanekaha, rimu, tree fern, tree fuchsia up to approximately 23m located as a vegetated ridgeline between Pinehaven and Emslie Roads.</p>	<p>AMENITY - Tree group represents a key characteristic of the urban <b>environment</b> and is regarded as a signature of place</p>

	42 Elmslie Road 46 Elmslie Road 48 Elmslie Road 56 Elmslie Road 58 Elmslie Road 60 Elmslie Road 62 Elmslie Road 64 Elmslie Road 70 Elmslie Road 72 Elmslie Road 74 Elmslie Road 76 Elmslie Road 78 Elmslie Road 80 Elmslie Road 82 Elmslie Road 68 Elmslie Road 66B Elmslie Road 137 Pinehaven Road 145A Pinehaven Road 145 Pinehaven Road 147 Pinehaven Road 149 Pinehaven Road 143 Pinehaven Road 103 Pinehaven Road 105 Pinehaven Road 107 Pinehaven Road 111A Pinehaven Road 115 Pinehaven Road 121 Pinehaven Road 123 Pinehaven Road 125 Pinehaven Road 129 Pinehaven Road 97 Pinehaven Road 99A Pinehaven Road 131 Pinehaven Road 135 Pinehaven Road 8 Elmslie Road 4 Elmslie Road 10 Elmslie Road 12 Elmslie Road		
--	---	--	--

		14 Elmslie Road 16 Elmslie Road 18 Elmslie Road 20 Elmslie Road 22 Elmslie Road 24 Elmslie Road 28 Elmslie Road 30 Elmslie Road 34 Elmslie Road 36 Elmslie Road 38 Elmslie Road 40A Elmslie Road 44 Elmslie Road 50 Elmslie Road 52 Elmslie Road 54A Elmslie Road		
386	46 47 49	106 Blue Mountains Road 13 Elmslie Road 17 Elmslie Road 21A Elmslie Road 23 Elmslie Road 25 Elmslie Road 27 Elmslie Road 128 Blue Mountains Road 140 Blue Mountains Road 142 Blue Mountains Road 144 Blue Mountains Road 146 Blue Mountains Road 148 Blue Mountains Road 150 Blue Mountains Road 43 Elmslie Road 45 Elmslie Road 47A Elmslie Road 49 Elmslie Road 51 Elmslie Road 53 Elmslie Road 55 Elmslie Road 57 Elmslie Road 59 Elmslie Road 61 Elmslie Road	Cluster of over 30 trees comprised of kamahi, manuka, kanaka, rewarewa, beech, rimu, wineberry, tree fuchsia, tree fern, miro, cabbage tree, rata up to approximately 25m located as a vegetated backdrop between Pinehaven Road and Blue Mountains Road.	AMENITY - Tree group represents a key characteristic of the urban <b>environment</b> and is regarded as a signature of place

		65 Elmslie Road 67 Elmslie Road 69 Elmslie Road 71 Elmslie Road 73 Elmslie Road 75 Elmslie Road 77 Elmslie Road 79 Elmslie Road 41A Elmslie Road 170 Blue Mountains Road 188 Blue Mountains Road 190 Blue Mountains Road 192 Blue Mountains Road 194 Blue Mountains Road 196 Blue Mountains Road 198 Blue Mountains Road 95 Elmslie Road 99 Elmslie Road 104 Blue Mountains Road 108 Blue Mountains Road 11 Elmslie Road 26 Forest Road 3 Elmslie Road 5 Elmslie Road 7 Elmslie Road 9 Elmslie Road 114 Blue Mountains Road		
387	46	42 Elmslie Road 46 Elmslie Road 48 Elmslie Road 44 Elmslie Road	Cluster of 16 - 20 trees comprised of beech, totara, European Beech up to approximately 23m located in rear garden in gully.	LANDSCAPE – Mature, uncommon, unusual or rare exotic specimens and/or indigenous remnants  AMENITY - Tree group represents a key characteristic of the urban <b>environment</b> and is regarded as a signature of place
391	45	104 Wyndham Road 94 Wyndham Road 102 Wyndham Road	Grove of 7 - 10 trees comprised of rimu up to approximately 13m located in front garden and driveway extending along internal <b>boundaries</b> .	LANDSCAPE – Mature, uncommon, unusual or rare exotic specimens and/or indigenous remnants and tree group maintains a strong natural form which is well established and integrated within the surrounding landscape  AMENITY - Tree group represents a key characteristic of the urban <b>environment</b> and is regarded as a signature of place



				ECOLOGY - Tree group canopy dominated by remnant tree(s) and naturally occurring associated vegetation which are native to that <b>environment</b> (i.e. early or pre-human)
411	46	117 Pinehaven Road 127 Pinehaven Road 26 Elmslie Road 111A Pinehaven Road 115 Pinehaven Road 121 Pinehaven Road 123 Pinehaven Road 125 Pinehaven Road 20 Elmslie Road 22 Elmslie Road 24 Elmslie Road	Cluster of over 30 trees comprised of beech, rimu, lancewood, totara, rewarewa, five finger, tree fern, marie, kamihi, pate, tawa, kanuka, manuku up to approximately 29m located an elevated backdrop of native forest and regenerating natives forming buffer to houses/pines	<p>LANDSCAPE – Mature, uncommon, unusual or rare exotic specimens and/or indigenous remnants</p> <p>AMENITY - Tree group represents a key characteristic of the urban <b>environment</b> and is regarded as a signature of place</p> <p>ECOLOGY - Tree group canopy dominated by remnant tree(s) and naturally occurring associated vegetation which are native to that <b>environment</b> (i.e. early or pre-human)</p>

## CHARACTER AREA: BARTON AVENUE

### Barton Avenue

The Barton Avenue Character Area is located to the north of Fergusson Drive along the Hutt Valley floor and adjoins the Royal Wellington Golf Course and Trentham Memorial Park.

Whilst much of the former cover of lowland forest has been cleared throughout residential development established throughout the Hutt Valley floor, pockets of remnant native trees have been retained through parts this character area and contribute to its mature woodland setting. Native tree groups have frequently been inter-planted with exotic specimen trees to reinforce this wooded setting.

Mature native trees are more typically encountered along the **boundaries** with Trentham Memorial Park and Wellington Golf Course, establishing a strong sense of enclosure along the northern end of the character area. To the south of the character area, a larger pocket of remnant native vegetation has recently been opened up to accommodate **Residential Units** to the south of Golf Course Road.

The margins of Fergusson Drive strengthen an established vegetation framework typically dominated by exotic specimen trees which continue into the character area along **property boundaries**.

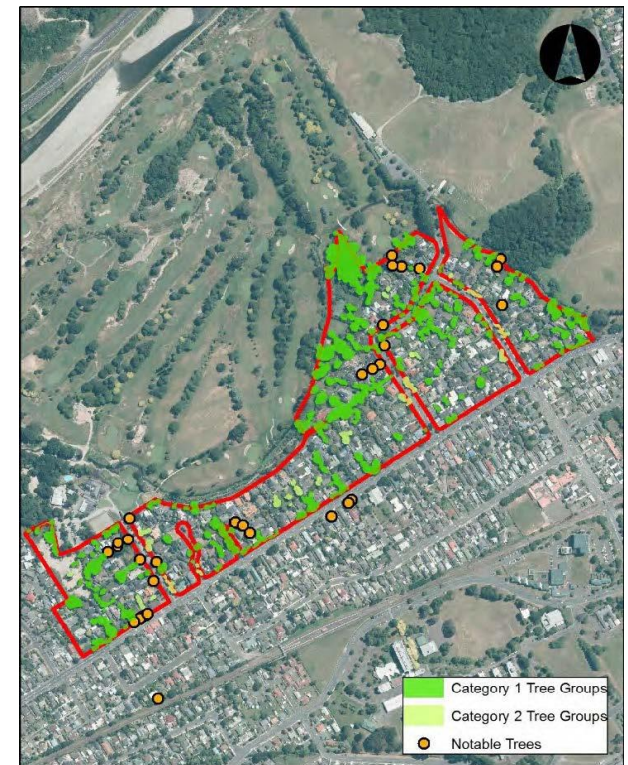
### TREE SPECIES

#### Notable Native Trees (including remnants)

Totara (*Podocarpus totara*) Matai (*Prumnopitys taxifolia*)  
Tawa (*Beilschmiedia tawa*) Kahikatea (*Dacrycarpus dacrydioides*)  
Titoki (*Alectryon excelsus*) Red Beech (*Nothofagus fusca*)  
Black Beech (*Fuscopora solandri*)  
Kowhai (*Sophora* spp.)  
Tanekaha (*Phyllocladus trichomanoides*)

#### Notable Exotic Trees

Oak (*Quercus* spp.) Maple (*Acer* spp.)  
Cypress (*Cupressus* spp.) Cedar (*Cedrus* spp.)  
Spruce (*Picea* spp.) Fir (*Abies* spp.)  
Poplar (*Populus* spp.) Birch (*Betula* spp.)  
Lime (*Tilia cordata*) Eucalypt (*Eucalyptus* spp.)  
Liquidambar (*Liquidambar styraciflua*) Ash (*Fraxinus* spp.)  
European beech (*Fagus* spp.) Tulip tree (*Liriodendron tulipifera*)  
Elm (*Ulmus* spp.) Copper beech (*Fagus sylvatica 'Purpurea'*)  
Honey locust (*Gleditsia triacanthos*) Robinia (*Robinia pseudoacacia*)  
Willow (*Salix* spp.)  
Douglas fir (*Pseudotsuga menziesii*)



**THREATS**

- Indiscriminate pruning / topping
- Wholesale clearing removal of vegetation for development
- Removal of diverse under-storey
- Soil compaction within the trees drip line
- Inappropriate siting of **structures** / utilities

**Character Area Barton Avenue – Urban Tree Groups**

No	Map Ref	Location	Tree Group Description	High Values
119	33 42	12 Kukupa Grove 283 Fergusson Drive 295 Fergusson Drive 297 Fergusson Drive 1 Bateson Way	Grove of 7 - 10 trees comprised of black beech up to approximately 17m located Wine Glass <b>Subdivision</b> .	<p>LANDSCAPE - Mature, uncommon, unusual or rare exotic specimens and/or indigenous remnants and tree group maintains a strong natural form which is well established and integrated within the surrounding landscape</p> <p>AMENITY - Tree group represents a key characteristic of the urban <b>environment</b> and is regarded as a signature of place</p> <p>ECOLOGY - Tree group canopy dominated by remnant tree(s) and naturally occurring associated vegetation which are native to that <b>environment</b> (i.e. early or pre-human)</p>
121	42	289 Fergusson Drive 291 Fergusson Drive 301 Fergusson Drive 295 Fergusson Drive 297 Fergusson Drive	Cluster of 11 - 15 trees comprised of oak, elm, chestnut, liquidambar, copper beech, kowhai, up to approximately 13m located street frontage, aligning access to Bateson Way.	<p>LANDSCAPE - Tree group maintains a strong natural form which is well established and integrated within the surrounding landscape</p> <p>AMENITY - District wide significance or landmark and / or highly visible from public areas and tree group represents a key characteristic of the urban <b>environment</b> and is regarded as a signature of place</p>
122	41	17 Gloucester Street 4 Marlborough Street 21A Gloucester Street 19 Gloucester Street	Line of 4 - 6 trees comprised of redwood, fir up to approximately 22m located rear <b>boundary</b> trees.	<p>LANDSCAPE - Tree group maintains a strong natural form which is well established and integrated within the surrounding landscape</p> <p>AMENITY - Tree group represents a key characteristic of the urban <b>environment</b> and is regarded as a signature of place</p>
124	32 33	27 Golf Road (RWGC) 8 Bateson Way 10 Bateson Way 12 Bateson Way 9 Bateson Way	Cluster of 16 – 20 trees comprised of titoki, tawa, kowhai, black beech, matai up to approximately 14m located in Wine Glass <b>Subdivision</b> .	<p>LANDSCAPE - Mature, uncommon, unusual or rare exotic specimens and/or indigenous remnants and tree group maintains a strong natural form which is well established and integrated within the surrounding landscape</p>

				<p>AMENITY - Tree group represents a key characteristic of the urban <b>environment</b> and is regarded as a signature of place</p> <p>ECOLOGY - Tree group canopy dominated by remnant tree(s) and naturally occurring associated vegetation which are native to that <b>environment</b> (i.e. early or pre-human)</p>
125	33	3 Bateson Way 5 Bateson Way	Cluster of 2-3 trees comprised of matai, beech, pseudopanax up to approximately 11m located in Wine Glass <b>Subdivision</b> .	AMENITY - Tree group represents a key characteristic of the urban <b>environment</b> and is regarded as a signature of place
126	33	24 Golf Road 22 Golf Road 26 Golf Road	Cluster of 7 - 10 trees comprised of cedar, copper beech, totara up to approximately 14m located in back garden adjoining golf course car park.	<p>LANDSCAPE - Tree group maintains a strong natural form which is well established and integrated within the surrounding landscape</p> <p>AMENITY - Tree group represents a key characteristic of the urban <b>environment</b> and is regarded as a signature of place</p>
127	33	12A Golf Road 16 Golf Road 2 Bateson Way 4 Bateson Way	Cluster of 11 - 15 trees comprised of titoki, kahikatea, totara, tree coprosma, cabbage tree, up to approximately 16m located Wine Glass <b>Subdivision</b>	<p>LANDSCAPE - Mature, uncommon, unusual or rare exotic specimens and/or indigenous remnants and tree group maintains a strong natural form which is well established and integrated within the surrounding landscape</p> <p>AMENITY - Tree group represents a key characteristic of the urban <b>environment</b> and is regarded as a signature of place</p> <p>ECOLOGY - Tree group canopy dominated by remnant tree(s) and naturally occurring associated vegetation which are native to that <b>environment</b> (i.e. early or pre-human)</p>
128	33 42	2 Golf Road 305 Fergusson Drive 4 Golf Road	Cluster of 7 - 10 trees comprised of oak, copper beech, kowhai, totara up to approximately 11m located In rear garden, bordering drive	AMENITY - Tree group represents a key characteristic of the urban <b>environment</b> and is regarded as a signature of place
129	33	24 Golf Road 22 Golf Road 27 Golf Road (RWGC) 6 Bateson Way 4 Bateson Way	Grove of 7 - 10 trees comprised of matai, copper beech, cabbage tree, ash up to approximately 14m located on <b>boundary</b> and rear garden adjoining golf course car park.	<p>LANDSCAPE - Mature, uncommon, unusual or rare exotic specimens and/or indigenous remnants and tree group maintains a strong natural form which is well established and integrated within the surrounding landscape</p> <p>AMENITY - Tree group represents a key characteristic of the urban <b>environment</b> and is regarded as a signature of place</p>
130	33 42	301 Fergusson Drive 305 Fergusson Drive	Cluster of 7 - 10 trees comprised of oak, liquidambar, lime tree up to approximately	LANDSCAPE - Tree group maintains a strong natural form which is well established and integrated within the surrounding landscape

			13m located in between <b>Residential Units</b> behind notable trees lining driveway	AMENITY - Tree group represents a key characteristic of the urban <b>environment</b> and is regarded as a signature of place
132	33 42	12A Golf Road 301 Fergusson Drive	Cluster of 11 - 15 trees comprised of totara, matai, kowhai, titoki, maple, tulip tree up to approximately 12m located Wine Glass <b>Subdivision</b>	LANDSCAPE - Mature, uncommon, unusual or rare exotic specimens and/or indigenous remnants and tree group maintains a strong natural form which is well established and integrated within the surrounding landscape  AMENITY - Tree group represents a key characteristic of the urban <b>environment</b> and is regarded as a signature of place  ECOLOGY - Tree group canopy dominated by remnant tree(s) and naturally occurring associated vegetation which are native to that <b>environment</b> (i.e. early or pre-human)
134	33	10 Golf Road 6 Golf Road	Grove of 2-3 trees comprised of European bech, copper beech up to approximately 13m located in front garden	LANDSCAPE - Tree group maintains a strong natural form which is well established and integrated within the surrounding landscape  AMENITY - Tree group represents a key characteristic of the urban <b>environment</b> and is regarded as a signature of place
135	33	12 Golf Road 18 Golf Road 10 Golf Road	Cluster of 7 - 10 trees comprised of cedar, totara, oak, copper beech up to approximately 12m located on driveway margin / internal <b>boundaries</b> .	LANDSCAPE - Tree group maintains a strong natural form which is well established and integrated within the surrounding landscape  AMENITY - Tree group represents a key characteristic of the urban <b>environment</b> and is regarded as a signature of place
136	33	24 Golf Road 22 Golf Road 26 Golf Road 16 Golf Road 18 Golf Road 2 Bateson Way 4 Bateson Way	Cluster of 11 - 15 trees comprised of oak, titoki, miro, totara, kaihikatea, cabbage tree, ash, tawa up to approximately 20m located in rear garden, <b>property boundary</b> .	LANDSCAPE - Tree group maintains a strong natural form which is well established and integrated within the surrounding landscape  AMENITY - Tree group represents a key characteristic of the urban <b>environment</b> and is regarded as a signature of place
137	33	26 Golf Road 27 Golf Road (RWGC)	Cluster of 4 - 6 trees comprised of kowhai, oak, European beech up to approximately 1m located bordering <b>properties</b> and golf course.	LANDSCAPE - Tree group maintains a strong natural form which is well established and integrated within the surrounding landscape  AMENITY - Tree group represents a key characteristic of the urban <b>environment</b> and is regarded as a signature of place
139	33	15 Golf Road 8 Oakmont	Cluster of 2-3 trees comprised of elf oak up to approximately 14m located on rear <b>property boundary</b> .	LANDSCAPE - Tree group maintains a strong natural form which is well established and integrated within the surrounding landscape

				AMENITY - Tree group represents a key characteristic of the urban <b>environment</b> and is regarded as a signature of place
140	33	23 Golf Road 15 Golf Road 19 Golf Road 21 Golf Road	Cluster of 4 - 6 trees comprised of beech, kowhai, elm, cypress up to approximately 15m located in front garden.	AMENITY - Tree group represents a key characteristic of the urban <b>environment</b> and is regarded as a signature of place
141	33	21 Golf Road 12 Oakmont	Grove of 2-3 trees comprised of oak up to approximately 12m located bordering golf course in rear of garden	LANDSCAPE - Tree group maintains a strong natural form which is well established and integrated within the surrounding landscape  AMENITY - Tree group represents a key characteristic of the urban <b>environment</b> and is regarded as a signature of place
142	33	11 Golf Road 3 Golf Road 5 Golf Road	Grove of 2-3 trees comprised of oak up to approximately 17m located on driveway frontage	LANDSCAPE - Tree group maintains a strong natural form which is well established and integrated within the surrounding landscape  AMENITY - Tree group represents a key characteristic of the urban <b>environment</b> and is regarded as a signature of place
143	33	1 Golf Road 3 Golf Road	Cluster of 2 - 3 trees comprised of gleditsia, kowhai, liquidambar, maple, elm up to approximately 9m located on street frontage, front garden.	AMENITY - Tree group represents a key characteristic of the urban environment and is regarded as a signature of place
144	33	4 Oakmont	Grove of 2-3 trees comprised of oak up to approximately 13m located bordering street and front garden	LANDSCAPE - Tree group maintains a strong natural form which is well established and integrated within the surrounding landscape  AMENITY - Tree group represents a key characteristic of the urban environment and is regarded as a signature of place
145	33	1 Oakmont	Grove of 2 - 3 trees comprised of oak up to approximately 9m located - street trees.	AMENITY - Tree group represents a key characteristic of the urban <b>environment</b> and is regarded as a signature of place
146	33	333 Fergusson Drive 3 Oakmont	Grove of 2-3 trees comprised of oak, elm up to approximately 15m located in front garden and adjoining street	LANDSCAPE - Tree group maintains a strong natural form which is well established and integrated within the surrounding landscape  AMENITY - Tree group represents a key characteristic of the urban <b>environment</b> and is regarded as a signature of place
148	33	27 Golf Road (GWRC) 6 Blundell Way 7 Blundell Way 7 Oakmont	Cluster of 4 - 6 trees comprised of oak, cabbage trees up to approximately 14m located in rear <b>boundary</b> adjoining golf club.	LANDSCAPE - Tree group maintains a strong natural form which is well established and integrated within the surrounding landscape

		9 Oakmont 11 Oakmont		AMENITY - District wide significance or landmark and / or highly visible from public areas and tree group represents a key characteristic of the urban <b>environment</b> and is regarded as a signature of place
149	33	2 Blundell Way 333 Fergusson Drive 337 Fergusson Drive 3 Oakmont 4 Blundell Way 5 Oakmont 6 Blundell Way	Grove of 4 - 6 trees comprised of oak up to approximately 18m located in rear garden/internal <b>boundaries</b> .	LANDSCAPE - Tree group maintains a strong natural form which is well established and integrated within the surrounding landscape  AMENITY - Tree group represents a key characteristic of the urban <b>environment</b> and is regarded as a signature of place
150	33	333 Fergusson Drive 335 Fergusson Drive 337 Fergusson Drive	Cluster of 2-3 trees comprised of oak, elm up to approximately 10m, located in front garden/main road frontage	AMENITY - District wide significance or landmark and / or highly visible from public areas and tree group represents a key characteristic of the urban <b>environment</b> and is regarded as a signature of place
151	33	2 Blundell Way 3 Blundell Way 4 Blundell Way 5 Blundell Way 6 Blundell Way 7 Blundell Way	Cluster of 11 - 15 trees comprised of robinia, oak, beech, kowhai, up to approximately 14m, located on an internal band aligning driveway and <b>property boundaries</b> .	LANDSCAPE - Tree group maintains a strong natural form which is well established and integrated within the surrounding landscape  AMENITY - Tree group represents a key characteristic of the urban <b>environment</b> and is regarded as a signature of place
152	33	1 Blundell Way 339 Fergusson Drive 341A Fergusson Drive 345 Fergusson Drive 347 Fergusson Drive 349 Fergusson Drive 2 Blundell Way 5 Blundell Way	Cluster of 7-10 trees comprised of beech, spruce, birch, magnolia, gleditsia, liquidambar, kowhai, up to approximately 12m, located in front garden bordering main <b>road</b> .	AMENITY - District wide significance or landmark and / or highly visible from public areas and tree group represents a key characteristic of the urban <b>environment</b> and is regarded as a signature of place
157	33	353 Fergusson Drive 355 Fergusson Drive 357A Fergusson Drive 359 Fergusson Drive 359A Fergusson Drive 361 Fergusson Drive 365 Fergusson Drive 367 Fergusson Drive 369 Fergusson Drive 373 Fergusson Drive	Cluster of 7 - 10 trees comprised of elm, ash, oak, kowhai, totara, beech up to approximately 14m located in rear gardens on <b>property boundaries</b> .	AMENITY - Tree group represents a key characteristic of the urban <b>environment</b> and is regarded as a signature of place

158	33	357 Fergusson Drive 361 Fergusson Drive 365 Fergusson Drive 367 Fergusson Drive 369 Fergusson Drive 359A Fergusson Drive 357A Fergusson Drive	Cluster of 4 - 6 trees comprised of beech, oak, kowhai, elm, eucalypt, spruce up to approximately 11m, located in front garden bordering main <b>road</b> .	LANDSCAPE - Tree group maintains a strong natural form which is well established and integrated within the surrounding landscape  AMENITY - District wide significance or landmark and / or highly visible from public areas and tree group represents a key characteristic of the urban <b>environment</b> and is regarded as a signature of place
159	33	371 Fergusson Drive 381 Fergusson Drive 379 Fergusson Drive	Cluster of 7 - 10 trees comprised of ash, oak, liquidambar, cedar up to approximately 14m, located from <b>road</b> frontage / front garden extending down driveway to rear garden.	LANDSCAPE - Tree group maintains a strong natural form which is well established and integrated within the surrounding landscape  AMENITY - District wide significance or landmark and / or highly visible from public areas and tree group represents a key characteristic of the urban <b>environment</b> and is regarded as a signature of place
161	33	373 Fergusson Drive 375 Fergusson Drive 377 Fergusson Drive 379 Fergusson Drive	approximately 13m, located in rear garden along driveway and internal <b>boundary</b> .	LANDSCAPE - Tree group maintains a strong natural form which is well established and integrated within the surrounding landscape  AMENITY - Tree group represents a key characteristic of the urban <b>environment</b> and is regarded as a signature of place
163	33	385A Fergusson Drive 387 Fergusson Drive 389 Fergusson Drive 391 Fergusson Drive 393 Fergusson Drive 395 Fergusson Drive	Grove of 4 - 6 trees comprised of oak, up to approximately 14m, located in front garden / main <b>road</b> following internal driveway.	LANDSCAPE - Tree group maintains a strong natural form which is well established and integrated within the surrounding landscape  AMENITY - District wide significance or landmark and / or highly visible from public areas and tree group represents a key characteristic of the urban <b>environment</b> and is regarded as a signature of place
165	33	383 Fergusson Drive 389 Fergusson Drive 391 Fergusson Drive	Cluster of 2 - 3 trees comprised of poplar, oak, birch, up to approximately 18m located in rear garden / internal <b>boundaries</b> .	AMENITY - Tree group represents a key characteristic of the urban <b>environment</b> and is regarded as a signature of place
166	33	27 Gold Road (RWGC) 377 Fergusson Drive 383 Fergusson Drive 20 Barton Road	Cluster of 11 - 15 trees comprised of oak, kowhai, liquidambar, beech, totara, eucalypt, cedar up to approximately 18m, located on golf course <b>boundary</b> and internal path leading off golf course.	LANDSCAPE - Tree group maintains a strong natural form which is well established and integrated within the surrounding landscape  AMENITY - Tree group represents a key characteristic of the urban <b>environment</b> and is regarded as a signature of place
168	33	2 Barton Road	Grove of 2-3 comprised of redwood, totara, up to approximately 13m, located just set back from street corner in front garden.	LANDSCAPE - Tree group maintains a strong natural form which is well established and integrated within the surrounding landscape



				AMENITY - District wide significance or landmark and / or highly visible from public areas and tree group represents a key characteristic of the urban <b>environment</b> and is regarded as a signature of place
169	33	405 Fergusson Drive Lot 2 DP 59132 Part Lot 19-20 Deposited Plan 1844	Cluster of 2-3 trees comprised of redwood, totara, up to approximately 13m, located in rear garden.	LANDSCAPE - Tree group maintains a strong natural form which is well established and integrated within the surrounding landscape  AMENITY - Tree group represents a key characteristic of the urban <b>environment</b> and is regarded as a signature of place
171	33	12 Barton Road 14 Barton Road 16 Barton Road 18 Barton Road	Cluster of 4 - 6 trees comprised of maple, ash up to approximately 10m located in front garden, driveway.	AMENITY - Tree group represents a key characteristic of the urban <b>environment</b> and is regarded as a signature of place
172	33	22 Barton Road 24 Barton Road 383 Fergusson Drive 389 Fergusson Drive 397A Fergusson Drive 397 Fergusson Drive 399 Fergusson Drive 26 Barton Road 20 Barton Road 26A Barton Road 16 Barton Road 18 Barton Road	Cluster of over 30 trees comprised of poplar, spruce, oak, totara, kowhai, robinia, juniper up to approximately 18m, located an internal band stretching though back gardens.	LANDSCAPE - Tree group maintains a strong natural form which is well established and integrated within the surrounding landscape  AMENITY - Tree group represents a key characteristic of the urban <b>environment</b> and is regarded as a signature of place
173	33	27 Golf Road (RWGC) 22 Barton Road 32 Barton Road 36 Barton Road 30 Barton Road	Cluster of Over 30 trees comprised of ash, silver birch, robinia, oak, liquidambar, plane, redwood, chestnut, European beech, maire, willow, up to approximately 19m, located in rear gardens, adjoining golf course on lower terrace, connecting with street.	LANDSCAPE - Tree group maintains a strong natural form which is well established and integrated within the surrounding landscape  AMENITY - Tree group represents a key characteristic of the urban <b>environment</b> and is regarded as a signature of place
174	33	36 Barton Road 42 Barton Road	Cluster of 16 - 20 trees comprised of oak, maple, kahikatea, fir, totara, larch, cypress, up to approximately 19m, located on driveway entrance to back garden, from street corner.	LANDSCAPE - Tree group maintains a strong natural form which is well established and integrated within the surrounding landscape  AMENITY - Tree group represents a key characteristic of the urban <b>environment</b> and is regarded as a signature of place
176	33	27 Golf Road (RWGC) 42 Barton Road	Cluster of over 30 trees comprised of rimu, kahikatea, tawa, kowhai, tanekaha, titoki,	LANDSCAPE - Mature, uncommon, unusual or rare exotic specimens and/or indigenous remnants and a large contiguous tree group or part of a wider

		48 Barton Road 54 Barton Road	totara, oak, willow, European beech, copper beech, poplar, ash, magnolia up to approximately 30m, a forest group located adjoining golf course.	indigenous forest group and tree group maintains a strong natural form which is well established and integrated within the surrounding landscape  AMENITY - Tree group represents a key characteristic of the urban <b>environment</b> and is regarded as a signature of place
178	33	48 Barton Road 50 Barton Road 54 Barton Road 56A Barton Road 58 Barton Road	Cluster of 7-20 trees comprised of totara, cabbage tree, oak, ash, maple, silver birch, up to approximately 13m, located on street front, following <b>property boundaries</b> and driveway.	LANDSCAPE - Mature, uncommon, unusual or rare exotic specimens and/or indigenous remnants and tree group maintains a strong natural form which is well established and integrated within the surrounding landscape  AMENITY - Tree group represents a key characteristic of the urban <b>environment</b> and is regarded as a signature of place  ECOLOGY - Tree group canopy dominated by remnant tree(s) and naturally occurring associated vegetation which are native to that <b>environment</b> (i.e. early or pre-human)
180	33	48 Barton Road 54 Barton Road 56A Barton Road	Cluster of 2 - 3 trees comprised of oak, kowhai up to approximately 12m located an internal group including vegetation along <b>boundaries</b> .	AMENITY - Tree group represents a key characteristic of the urban <b>environment</b> and is regarded as a signature of place
181	33	58 Barton Road 60 Barton Road	Cluster of 7 - 10 trees comprised of kowhai, oak, robinia, European beech, copper beech, olive, holly up to approximately 13m, located street trees in front garden.	LANDSCAPE - Tree group maintains a strong natural form which is well established and integrated within the surrounding landscape  AMENITY - Tree group represents a key characteristic of the urban <b>environment</b> and is regarded as a signature of place
183	33	60 Barton Road 64 Barton Road	Cluster of 4 - 6 trees comprised of totara, matai, lime, oak up to approximately 11m, located on street frontage and internal <b>boundary</b> .	LANDSCAPE - Mature, uncommon, unusual or rare exotic specimens and/or indigenous remnants and tree group maintains a strong natural form which is well established and integrated within the surrounding landscape  AMENITY - Tree group represents a key characteristic of the urban <b>environment</b> and is regarded as a signature of place  ECOLOGY – Tree group canopy dominated by remnant tree(s) and naturally occurring associated vegetation which are native to that <b>environment</b> (i.e. early or pre-human)
186	33	64 Barton Road 68A Barton Road	Cluster of 4 - 6 trees comprised of totara, kowhai up to approximately 14m, located bordering golf course, in rear garden.	LANDSCAPE - Mature, uncommon, unusual or rare exotic specimens and/or indigenous remnants

				<p>AMENITY - Tree group represents a key characteristic of the urban <b>environment</b> and is regarded as a signature of place</p> <p>ECOLOGY - Tree group canopy dominated by remnant tree(s) and naturally occurring associated vegetation which are native to that <b>environment</b> (i.e. early or pre-human)</p>
187	33	23 Barton Road 21 Barton Road 19 Barton Road	Cluster of 4 - 6 trees comprised of ash, kowhai, oak, silver birch, European beech up to approximately 14m, located in front garden, street frontage.	<p>LANDSCAPE - Tree group maintains a strong natural form which is well established and integrated within the surrounding landscape</p> <p>AMENITY - Tree group represents a key characteristic of the urban <b>environment</b> and is regarded as a signature of place</p>
189	33	27 Barton Road 29 Barton Road	Line of 4 - 6 trees comprised of lime, ash, cabbage tree up to approximately 15m, located on corner on street frontage / front garden.	<p>LANDSCAPE - Tree group maintains a strong natural form which is well established and integrated within the surrounding landscape</p> <p>AMENITY - Tree group represents a key characteristic of the urban <b>environment</b> and is regarded as a signature of place</p>
190	33	21 Barton Road 19 Barton Road	Cluster of 2 - 3 trees comprised of red beech, elm, tulip tree, camphor tree up to approximately 10m located situated internally beside shared driveway.	AMENITY - Tree group represents a key characteristic of the urban <b>environment</b> and is regarded as a signature of place
191	33 34	29 Barton Road 33 Barton Road 35 Barton Road 39 Barton Road 43 Barton Road	Cluster of 16 - 20 trees comprised of totara, copper beech, titoki, cedar, lime, kowhai, up to approximately 13m, located on corner street frontage, street trees and front garden.	<p>LANDSCAPE - Mature, uncommon, unusual or rare exotic specimens and/or indigenous remnants and tree group maintains a strong natural form which is well established and integrated within the surrounding landscape</p> <p>AMENITY - Tree group represents a key characteristic of the urban <b>environment</b> and is regarded as a signature of place</p>
192	33 34	23 Barton Road 29 Barton Road 33 Barton Road 35 Barton Road 49 Barton Avenue 51 Barton Avenue 55 Barton Avenue 59 Barton Avenue	Cluster of 7 - 10 trees comprised of lime, ash, copper beech, oak, totara, elm, birch, kowhai, kauri, up to approximately 13m, located in rear garden, internal <b>boundary</b> .	<p>LANDSCAPE - Mature, uncommon, unusual or rare exotic specimens and/or indigenous remnants</p> <p>AMENITY - Tree group represents a key characteristic of the urban <b>environment</b> and is regarded as a signature of place</p>
193	34	43 Barton Road	Grove of 2 - 3 trees comprised of totara up to approximately 11m, located in front garden.	LANDSCAPE - Mature, uncommon, unusual or rare exotic specimens and/or indigenous remnants and tree group maintains a strong natural form which is well established and integrated within the surrounding landscape

				<p>AMENITY - Tree group represents a key characteristic of the urban <b>environment</b> and is regarded as a signature of place</p> <p>ECOLOGY - Tree group canopy dominated by remnant tree(s) and naturally occurring associated vegetation which are native to that <b>environment</b> (i.e. early or pre-human)</p>
194	34	35 Barton Road 39 Barton Road 43 Barton Road 49 Barton Avenue 51 Barton Avenue 55 Barton Avenue	Cluster of 11 - 15 trees comprised of oak, totara, kahikatea, cabbage tree, cedar, up to approximately 15m, located in rear garden, internal <b>boundary</b> and driveway margin.	<p>LANDSCAPE - Tree group maintains a strong natural form which is well established and integrated within the surrounding landscape</p> <p>AMENITY - Tree group represents a key characteristic of the urban <b>environment</b> and is regarded as a signature of place</p>
195	33	13 Barton Road 15 Barton Road 11 Barton Road 13A Barton Road 9 Barton Road	Cluster of 4 - 6 trees comprised of oak, liquidambar, kowhai, maple, beech up to approximately 11m located in front garden, street frontage.	AMENITY - Tree group represents a key characteristic of the urban <b>environment</b> and is regarded as a signature of place
196	33 34	49 Barton Avenue 51 Barton Avenue 9 Barton Road 11 Barton Road 13A Barton Road	Cluster of 2 - 3 trees comprised of European beech, maple, up to approximately 12m, located in rear garden internal <b>boundary</b> .	AMENITY - Tree group represents a key characteristic of the urban <b>environment</b> and is regarded as a signature of place
198	34	1 Barton Road 5 Barton Road	Grove of 2 - 3 trees comprised of oak, up to approximately 12m, located in front garden, main <b>road</b> frontage.	<p>LANDSCAPE - Tree group maintains a strong natural form which is well established and integrated within the surrounding landscape</p> <p>AMENITY - District wide significance or landmark and / or highly visible from public areas and tree group represents a key characteristic of the urban <b>environment</b> and is regarded as a signature of place</p>
200	33 34	3 Barton Road 5 Barton Road 415 Fergusson Drive 417 Fergusson Drive 419 Fergusson Drive 421 Fergusson Drive 425 Fergusson Drive 69 Barton Avenue 73 Barton Avenue	Cluster of 7 - 10 trees comprised of copper beech, oak, cedar, silver birch, cabbage tree, up to approximately 14m located internal to main <b>properties</b> along main <b>road</b> forming scattered group.	<p>LANDSCAPE - Tree group maintains a strong natural form which is well established and integrated within the surrounding landscape</p> <p>AMENITY - Tree group represents a key characteristic of the urban <b>environment</b> and is regarded as a signature of place</p>

		75 Barton Avenue		
202	34	67 Barton Avenue 69 Barton Avenue 73 Barton Avenue 75 Barton Avenue	Cluster of 2 - 3 trees comprised of ash, silver birch, magnolia up to approximately 11m located in front garden to side street.	AMENITY - Tree group represents a key characteristic of the urban <b>environment</b> and is regarded as a signature of place
203	34	57 Barton Avenue 29 Barton Avenue	Cluster of 2 - 3 trees comprised of totara up to approximately 9m located in rear garden	LANDSCAPE - Mature, uncommon, unusual or rare exotic specimens and/or indigenous remnants  AMENITY - Tree group represents a key characteristic of the urban <b>environment</b> and is regarded as a signature of place
204	34	55 Barton Road 57 Barton Road 59 Barton Road 61 Barton Road 63 Barton Road	Cluster of 7 - 10 trees comprised of ginkgo, oak, magnolia, silver birch, liquidambar, totara, up to approximately 13m located on street frontage, includes street trees and front garden.	LANDSCAPE - Tree group maintains a strong natural form which is well established and integrated within the surrounding landscape  AMENITY - Tree group represents a key characteristic of the urban <b>environment</b> and is regarded as a signature of place
207	34	116 Barton Avenue	Cluster of 4 - 6 trees comprised of maple, oak up to approximately 13m located on main <b>road</b> frontage.	LANDSCAPE - Tree group maintains a strong natural form which is well established and integrated within the surrounding landscape  AMENITY - District wide significance or landmark and / or highly visible from public areas
208	34	435 Fergusson Drive 437 Fergusson Drive 439 Fergusson Drive 441 Fergusson Drive	Cluster of 2 - 3 trees comprised of oak, elm up to approximately 14m located on main <b>road</b> frontage, aligning driveway.	LANDSCAPE - Tree group maintains a strong natural form which is well established and integrated within the surrounding landscape  AMENITY - District wide significance or landmark and / or highly visible from public areas and tree group represents a key characteristic of the urban <b>environment</b> and is regarded as a signature of place
210	34	106 Barton Avenue 108 Barton Avenue 110A Barton Avenue 110 Barton Avenue 112 Barton Avenue 437 Fergusson Drive	Cluster of 4 - 6 trees comprised of totara, kahikatea, oak, up to approximately 15m located internal rear <b>boundaries</b> , aligning driveway.	LANDSCAPE - Mature, uncommon, unusual or rare exotic specimens and/or indigenous remnants  AMENITY - Tree group represents a key characteristic of the urban <b>environment</b> and is regarded as a signature of place  ECOLOGY - Tree group canopy dominated by remnant tree(s) and naturally occurring associated vegetation which are native to that <b>environment</b> (i.e. early or pre-human)
212	34	94 Barton Avenue 96 Barton Avenue	Cluster of 7 - 10 trees comprised of maple, cherry, silver birch, lancewood, cabbage	AMENITY - Tree group represents a key characteristic of the urban <b>environment</b> and is regarded as a signature of place

		98 Barton Avenue 100 Barton Avenue 102 Barton Avenue 104 Barton Avenue	tree up to approximately 9m located - street trees front garden.	
213	34	441 Fergusson Drive 443 Fergusson Drive	Cluster of 7 - 10 trees comprised of fir, eucalypt, copper beech, cypress, totara, cedar, magnolia up to approximately 12m located on main <b>road</b> frontage, front garden.	AMENITY - District wide significance or landmark and / or highly visible from public areas and tree group represents a key characteristic of the urban <b>environment</b> and is regarded as a signature of place
214	34	100 Barton Avenue 110A Barton Avenue 110 Barton Avenue 439 Fergusson Drive 441 Fergusson Drive 443 Fergusson Drive	Cluster of 21 - 30 trees comprised of elm, oak, totara, gleditsia, willow, poplar, matai up to approximately 22m located in rear gardens / <b>boundary</b> of reserve.	LANDSCAPE - Tree group maintains a strong natural form which is well established and integrated within the surrounding landscape  AMENITY - District wide significance or landmark and / or highly visible from public areas and tree group represents a key characteristic of the urban <b>environment</b> and is regarded as a signature of place
215	34	92 Barton Avenue 92A Barton Avenue 96 Barton Avenue 98 Barton Avenue	Cluster of 4 - 6 trees comprised of totara, kahikatea, oak, up to approximately 15m located internal rear <b>boundaries</b> , aligning driveway.	LANDSCAPE - Tree group maintains a strong natural form which is well established and integrated within the surrounding landscape  AMENITY - Tree group represents a key characteristic of the urban <b>environment</b> and is regarded as a signature of place
216	34	92 Barton Avenue 92A Barton Avenue 86 Barton Avenue	Cluster of 4 - 6 trees comprised of oak, kowhai, copper beech up to approximately 16m located on border of <b>property boundary</b> and reserve.	LANDSCAPE - Tree group maintains a strong natural form which is well established and integrated within the surrounding landscape  AMENITY - Tree group represents a key characteristic of the urban <b>environment</b> and is regarded as a signature of place
217	34	80 Barton Avenue 82 Barton Avenue	Cluster of 7 - 10 trees comprised of totara, kahikatea, cabbage tree, kowhai, copper beech, kauri up to approximately 18m located on stream <b>boundary</b> rear garden.	LANDSCAPE - Mature, uncommon, unusual or rare exotic specimens and/or indigenous remnants and tree group maintains a strong natural form which is well established and integrated within the surrounding landscape  AMENITY - Tree group represents a key characteristic of the urban <b>environment</b> and is regarded as a signature of place
218	34	80 Barton Avenue 84 Barton Avenue 86 Barton Avenue 88 Barton Avenue 82 Barton Avenue	Cluster of 4 - 6 trees comprised of birch, cherry, magnolia, totara up to approximately 8m located in front garden street trees.	AMENITY - Tree group represents a key characteristic of the urban <b>environment</b> and is regarded as a signature of place

219	34	76 Barton Avenue 80 Barton Avenue	Grove of 2 - 3 trees comprised of totara up to approximately 12m located in front garden / street frontage.	<p>LANDSCAPE - Mature, uncommon, unusual or rare exotic specimens and/or indigenous remnants</p> <p>AMENITY - Tree group represents a key characteristic of the urban <b>environment</b> and is regarded as a signature of place</p> <p>ECOLOGY – Tree group canopy dominated by remnant tree(s) and naturally occurring associated vegetation which are native to that <b>environment</b> (i.e. early or pre-human)</p>
221	34	76 Barton Avenue 80 Barton Avenue	Cluster of 4 - 6 trees comprised of willow, kowhai, eucalypt, oak up to approximately 14m located in rear garden / forming edge of park.	<p>AMENITY - District wide significance or landmark and / or highly visible from public areas and tree group represents a key characteristic of the urban <b>environment</b> and is regarded as a signature of place</p>
222	34	70 Barton Road	Cluster of 2 - 3 trees comprised of totara, birch up to approximately 9m located on street corner near park entrance.	<p>LANDSCAPE – Mature, uncommon, unusual or rare exotic specimens and/or indigenous remnants</p> <p>AMENITY - Tree group represents a key characteristic of the urban <b>environment</b> and is regarded as a signature of place</p> <p>ECOLOGY – Tree group canopy dominated by remnant tree(s) and naturally occurring associated vegetation which are native to that <b>environment</b> (i.e. early or pre-human)</p>
223	34	70-72 Barton Road 76 Barton Avenue	Cluster of 2 - 3 trees comprised of fir, maple up to approximately 11m located lining driveway to street.	<p>AMENITY - Tree group represents a key characteristic of the urban <b>environment</b> and is regarded as a signature of place</p>

## CHARACTER AREA: PALFREY STREET

### Palfrey Street

The Palfrey Street Character Area is located within the residential area of the Hutt Valley to the west of the town centre along the valley floor.

Single storey bungalows amongst remnant native trees form a cohesive feature throughout this character area, with several totara specimens and groups extending throughout residential development. This vegetation retains part of the pre-settlement floodplain vegetation which formerly extended throughout the valley floor.

Native trees have frequently been inter-planted with large exotic specimens along internal **boundaries** which reinforce a strong wooded framework and backdrop to **Residential Units**. Several of the smaller tree groups are retained in close proximity to **buildings** and fences and are frequently subject to compaction around the root zones within the **dripline**. Several remnant totara have been retained as street trees on narrow grass verges contributing a strong characteristic through this area.

### TREE SPECIES

#### Notable Native Trees (including remnants)

Totara (*Podocarpus totara*) Rimu (*Dacrydium cupressinum*)

Black Beech (*Fuscospora solandri*)

Red Beech (*Nothofagus fusca*)

Miro (*Prumnopitys ferruginea*) Pate (*Schefflera digitata*)

Titoki (*Alectryon excelsus*) Kowhai (*Sophora* spp.)

Rewarewa (*Knightia excelsa*) Tanekaha (*Phyllocladus trichomanoides*)

Cabbage Tree (*Cordyline australis*) Lancewood (*Pseudopanax crassifolius*)

#### Notable Exotic Trees

Oak (*Quercus* spp.) English beech (*Fagus sylvatica*)

Copper Beech (*Fagus sylvatica* 'Purpurea') Ash (*Fraxinus* spp.)

Elm (*Ulmus* spp.) Gingko (*Ginkgo biloba*)

Maple (*Acer* spp.) Birch (*Betulaceae* spp.)

Gum (*Eucalyptus* spp.)

### THREATS

- Indiscriminate pruning / topping
- Removal of diverse under-storey
- Compaction within the tree drip zone
- Inappropriate siting of structures / utilities





Character Area Palfrey Street – Urban Tree Groups				
No	Map Ref	Location	Tree Group Description	High Values
229	26	1 MacLean Street 3 MacLean Street 3 Wood Street 5 Wood Street 7 Wood Street	Cluster of 4 - 6 trees comprised of beech, totara, up to approximately 11m located in back garden, adjacent rear lane.	<p>LANDSCAPE – Mature, uncommon, unusual or rare exotic specimens and/or indigenous remnants</p> <p>AMENITY - Tree group represents a key characteristic of the urban <b>environment</b> and is regarded as a signature of place</p>
231	26	1C Wood Street 1 Wood Street	Cluster of 2 - 3 trees comprised of kowhai, totara up to approximately 11m located in front garden / street frontage.	<p>LANDSCAPE - Mature, uncommon, unusual or rare exotic specimens and/or indigenous remnants</p> <p>AMENITY - Tree group represents a key characteristic of the urban <b>environment</b> and is regarded as a signature of place</p> <p>ECOLOGY – Tree group canopy dominated by remnant tree(s) and naturally occurring associated vegetation which are native to that <b>environment</b> (i.e. early or pre-human)</p>
234	26	15 Brown Street 17 Brown Street	Grove of 2 - 3 trees comprised of totara, up to approximately 14m located in front garden, internal <b>boundary</b> .	<p>LANDSCAPE - Mature, uncommon, unusual or rare exotic specimens and/or indigenous remnants and tree group maintains a strong natural form which is well established and integrated within the surrounding landscape</p> <p>AMENITY - Tree group represents a key characteristic of the urban <b>environment</b> and is regarded as a signature of place</p> <p>ECOLOGY – Tree group canopy dominated by remnant tree(s) and naturally occurring associated vegetation which are native to that <b>environment</b> (i.e. early or pre-human)</p>
237	26	16 Benzie Avenue 18 Benzie Avenue 20 Benzie Avenue	Cluster of 11 - 15 trees comprised of kowhai, totara, cabbage tree, elm up to approximately 15m located in front garden, street frontage.	<p>LANDSCAPE - Mature, uncommon, unusual or rare exotic specimens and/or indigenous remnants</p> <p>AMENITY - Tree group represents a key characteristic of the urban <b>environment</b> and is regarded as a signature of place</p> <p>ECOLOGY – Tree group canopy dominated by remnant tree(s) and naturally occurring associated vegetation which are native to that <b>environment</b> (i.e. early or pre-human)</p>

238	26	13 Palfrey Street	Cluster of 2 - 3 trees comprised of totara, hinau up to approximately 11m located internal trees adjacent to- <b>Residential Unit</b> .	<p>LANDSCAPE - Mature, uncommon, unusual or rare exotic specimens and/or indigenous remnants</p> <p>AMENITY - Tree group represents a key characteristic of the urban <b>environment</b> and is regarded as a signature of place</p> <p>ECOLOGY – Tree group canopy dominated by remnant tree(s) and naturally occurring associated vegetation which are native to that <b>environment</b> (i.e. early or pre-human)</p>
239	26	8 Benzie Avenue 10 Benzie Avenue 12 Benzie Avenue	Grove of 4 - 6 trees comprised of totara up to approximately 11m located in front garden, street frontage.	<p>LANDSCAPE - Mature, uncommon, unusual or rare exotic specimens and/or indigenous remnants</p> <p>AMENITY - Tree group represents a key characteristic of the urban <b>environment</b> and is regarded as a signature of place</p> <p>ECOLOGY – Tree group canopy dominated by remnant tree(s) and naturally occurring associated vegetation which are native to that <b>environment</b> (i.e. early or pre-human)</p>
240	26	2 Wood Street 4 Wood Street	Cluster of 4 - 6 trees comprised of totara, elm up to approximately 12m located <b>boundary</b> vegetation, street frontage.	<p>LANDSCAPE - Mature, uncommon, unusual or rare exotic specimens and/or indigenous remnants</p> <p>AMENITY - Tree group represents a key characteristic of the urban <b>environment</b> and is regarded as a signature of place</p> <p>ECOLOGY – Tree group canopy dominated by remnant tree(s) and naturally occurring associated vegetation which are native to that <b>environment</b> (i.e. early or pre-human)</p>
241	26	18 Benzie Avenue 20 Benzie Avenue 2 Wood Street	Cluster of 4 - 6 trees comprised of totara kowhai up to approximately 13m located <b>boundary</b> vegetation, street frontage.	<p>LANDSCAPE - Mature, uncommon, unusual or rare exotic specimens and/or indigenous remnants</p> <p>AMENITY - Tree group represents a key characteristic of the urban <b>environment</b> and is regarded as a signature of place</p> <p>ECOLOGY – Tree group canopy dominated by remnant tree(s) and naturally occurring associated vegetation which are native to that <b>environment</b> (i.e. early or pre-human)</p>

242	26	4 Wood Street	Grove of 7 - 10 trees comprised of totara, beech, tanekaha, titoki, kowhai up to approximately 14m located in front garden, street frontage / corner.	<p>LANDSCAPE - Mature, uncommon, unusual or rare exotic specimens and/or indigenous remnants and tree group maintains a strong natural form which is well established and integrated within the surrounding landscape</p> <p>AMENITY - Tree group represents a key characteristic of the urban <b>environment</b> and is regarded as a signature of place</p> <p>ECOLOGY - Tree group canopy dominated by remnant tree(s) and naturally occurring associated vegetation which are native to that <b>environment</b> (i.e. early or pre-human)</p>
243	26	4 Wood Street 3 Palfrey Street 5 Palfrey Street 5A Palfrey Street 7 Palfrey Street 9 Palfrey Street 13 Palfrey Street	Line of 21 - 30 trees comprised of totara, maire, beech, oak, pate, rewarewa, titoki, miro up to approximately 15m located in front garden / street trees.	<p>LANDSCAPE - Mature, uncommon, unusual or rare exotic specimens and/or indigenous remnants and tree group maintains a strong natural form which is well established and integrated within the surrounding landscape</p> <p>AMENITY - Tree group represents a key characteristic of the urban <b>environment</b> and is regarded as a signature of place</p> <p>ECOLOGY - Tree group canopy dominated by remnant tree(s) and naturally occurring associated vegetation which are native to that <b>environment</b> (i.e. early or pre-human)</p>
244	26	10 Benzie Avenue 12A Benzie Avenue 14 Benzie Avenue 16 Benzie Avenue 18 Benzie Avenue 5 Palfrey Street 5A Palfrey Street 7 Palfrey Street 9 Palfrey Street	Cluster of 11 - 15 trees comprised of totara, kowhai, beech, titoki up to approximately 15m located internal <b>boundary</b> , rear gardens.	<p>LANDSCAPE - Mature, uncommon, unusual or rare exotic specimens and/or indigenous remnants and tree group maintains a strong natural form which is well established and integrated within the surrounding landscape</p> <p>AMENITY - Tree group represents a key characteristic of the urban <b>environment</b> and is regarded as a signature of place</p> <p>ECOLOGY - Tree group canopy dominated by remnant tree(s) and naturally occurring associated vegetation which are native to that <b>environment</b> (i.e. early or pre-human)</p>
245	26	3 Palfrey Street 5 Palfrey Street	Grove of 2 - 3 trees comprised of totara up to approximately 14m located in rear garden adjacent to <b>property boundary</b> .	<p>LANDSCAPE - Mature, uncommon, unusual or rare exotic specimens and/or indigenous remnants</p> <p>AMENITY - Tree group represents a key characteristic of the urban <b>environment</b> and is regarded as a signature of place</p> <p>ECOLOGY - Tree group canopy dominated by remnant tree(s) and naturally occurring associated vegetation which are native to that <b>environment</b> (i.e. early or pre-human)</p>

247	26	51 Martin Street 53 Martin Street	Cluster of 2 - 3 trees comprised of totara, oak up to approximately 11m located on driveway border / front garden.	LANDSCAPE - Mature, uncommon, unusual or rare exotic specimens and/or indigenous remnants  AMENITY - Tree group represents a key characteristic of the urban <b>environment</b> and is regarded as a signature of place
248	26	57 Martin Street	Cluster of 4 - 6 trees comprised of totara, copper beech, rimu up to approximately 15m located internal band extending into rear garden.	LANDSCAPE - Mature, uncommon, unusual or rare exotic specimens and/or indigenous remnants  AMENITY - Tree group represents a key characteristic of the urban <b>environment</b> and is regarded as a signature of place  ECOLOGY - Tree group canopy dominated by remnant tree(s) and naturally occurring associated vegetation which are native to that <b>environment</b> (i.e. early or pre-human)
252		1/2 Palfrey Street 4 Palfrey Street 67 Martin Street 71 Martin Street	Cluster of 4 - 6 trees comprised of totara up to approximately 13m located in rear gardens behind <b>Residential Units</b> .	LANDSCAPE - Mature, uncommon, unusual or rare exotic specimens and/or indigenous remnants  AMENITY - Tree group represents a key characteristic of the urban <b>environment</b> and is regarded as a signature of place  ECOLOGY - Tree group canopy dominated by remnant tree(s) and naturally occurring associated vegetation which are native to that <b>environment</b> (i.e. early or pre-human)
253	26	3 Murray Street 5 Murray Street 11 Murray Street 69 Martin Street 2/77 Martin Street 71 Martin Street 73 Martin Street 75 Martin Street	Cluster of 7 - 10 trees comprised of oak, copper beech, elm, totara up to approximately 17m located internal band in rear of <b>properties</b> .	LANDSCAPE - Tree group maintains a strong natural form which is well established and integrated within the surrounding landscape  AMENITY - Tree group represents a key characteristic of the urban <b>environment</b> and is regarded as a signature of place
254	26	6 Palfrey Street 8 Palfrey Street 8A Palfrey Street 12 Palfrey Street 8A Wood Street	Cluster of 7 - 10 trees comprised of totara, kowhai, rimu, cabbage tree, titoki, lancewood up to approximately 13m located on street frontage.	LANDSCAPE – Tree group maintains a strong natural form which is well established and integrated within the surrounding landscape  AMENITY - Tree group represents a key characteristic of the urban <b>environment</b> and is regarded as a signature of place
255	26	8A Wood Street 10B Wood Street	Cluster of 7 - 10 trees comprised of totara, oak, beech, rimu, ginkgo up to	LANDSCAPE - indigenous remnants and tree group maintains a strong natural form which is well established and integrated within the surrounding landscape

		10C Wood Street 1/12A Wood Street 12 Wood Street 11 Murray Street 13 Murray Street 75 Martin Street	approximately 18m located internal band of mature trees along internal <b>boundary</b>	AMENITY - Tree group represents a key characteristic of the urban <b>environment</b> and is regarded as a signature of place
256	26	12 Palfrey Street 14 Palfrey Street	Cluster of 2 - 3 trees comprised of totara, kowhai up to approximately 11m located in front garden, street frontage.	LANDSCAPE - Mature, uncommon, unusual or rare exotic specimens and/or indigenous remnants  AMENITY - Tree group represents a key characteristic of the urban <b>environment</b> and is regarded as a signature of place
375	26	14 Palfrey Street 8A Wood Street 8 Wood Street	Grove of 4 - 6 trees comprised of totara up to approximately 12m located in front garden with street trees and one tree in back garden.	LANDSCAPE - Mature, uncommon, unusual or rare exotic specimens and/or indigenous remnants  AMENITY - Tree group represents a key characteristic of the urban <b>environment</b> and is regarded as a signature of place  ECOLOGY - Tree group canopy dominated by remnant tree(s) and naturally occurring associated vegetation which are native to that <b>environment</b> (i.e. early or pre-human)

## CHARACTER AREA: BIRCHVILLE

### Birchville

The Birchville Character Area is located along the northern edge of the Hutt Valley near the confluence of the Akatarawa and Hutt Rivers.

This character area adjoins a pocket of remnant lowland forest within Rata Park which continues through the north-western portion of this character area in association with residential development. Large exotic 'parkland' tree specimens have been planted in association with native remnants and enclose the margins of Akatarawa Road and, to a lesser degree, Rata Street.

The south-eastern edge of the character along Rata Street adjoin a rising backdrop of lower stature exotic vegetation along the margins of small canalised stream.

### TREE SPECIES

#### Notable Native Trees (including remnants)

Red Beech (*Nothofagus fusca*)  
 Black Beech (*Fuscospora solandri*)  
 Rimu (*Dacrydium cupressinum*) Kahikatea (*Dacrycarpus dacrydioides*)  
 Totara (*Podocarpus totara*) Matai (*Prumnopitys taxifolia*)  
 Tawa (*Beilschmiedia tawa*) Titoki (*Alectryon excelsus*)  
 Hinau (*Elaeocarpus dentatus*) Cabbage tree (*Cordyline australis*)  
 Kowhai (*Sophora* spp.)

#### Notable Exotic Trees

Oak (*Quercus* spp.) Alder (*Alnus glutinosa*)  
 Poplar (*Populus* spp.) Juniper (*Juniperus* spp.)  
 Fir (*Abies* spp.) Giant Redwood (*Sequoiadendron giganteum*)  
 Douglas Fir (*Pseudotsuga menziesii*)

### THREATS

- Indiscriminate pruning / topping
- Removal of diverse under-storey
- Soil compaction within the tree drip zone
- Inappropriate siting of structures / utilities
- Damage from pest plants or animals



### Character Area Birchville – Urban Tree Groups

No	Map Ref	Location	Tree Group Description	High Values
----	---------	----------	------------------------	-------------

258	7 1	16 Rata Street	Cluster of 2 – 3 trees comprised of matai, oak up to approximately 14m located in group at end of Rata St, opening onto school / open space.	LANDSCAPE - Mature, uncommon, unusual or rare exotic specimens and/or indigenous remnants  AMENITY - District wide significance or landmark and/or highly visible from public areas AND tree group represents a key characteristic of the urban <b>environment</b> and is regarded as a signature of place
259	7	144 Akatarawa Road 17 Rata Street 21 Rata Street	Cluster of 2 – 3 trees comprised of fir, oak up to approximately 18m located in front garden specimen trees bordering street	LANDSCAPE – Tree group maintains a strong natural form which is well established and integrated within the surrounding location  AMENITY - Tree group represents a key characteristic of the urban <b>environment</b> and is regarded as a signature of place
261	7	136 Akatarawa Road 7 Rata Street 9 Rata Street Cluster	Cluster of 4 – 6 trees comprised of redwood, oak, fir, copper beech up to approximately 15m located in front garden, internal <b>boundaries</b> .	LANDSCAPE - Tree group maintains a strong natural form which is well established and integrated within the surrounding landscape  AMENITY - Tree group represents a key characteristic of the urban <b>environment</b> and is regarded as a signature of place
263	7	130 Akatarawa Road 132 Akatarawa Road	Cluster of 11 – 15 trees comprised of rimu, kowhai up to approximately 13m located in front garden, street front.	AMENITY - Tree group represents a key characteristic of the urban <b>environment</b> and is regarded as a signature of place
266	1	150 Akatarawa Road 152 Akatarawa Road 21 Rata Street	Cluster of over 30 trees comprised of matai, beech, kahikatea, tawa up to approximately 19m located at edge of <b>property boundary</b> and reserve / Akatarawa Rd.	LANDSCAPE - Mature, uncommon, unusual or rare exotic specimens and/or indigenous remnants and tree group maintains a strong natural form which is well established and integrated within the surrounding landscape  AMENITY - District wide significance or landmark and / or highly visible from public areas AND tree group represents a key characteristic of the urban <b>environment</b> and is regarded as a signature of place
267	7 1	11 Rata Street 134 Akatarawa Road 136 Akatarawa Road 138 Akatarawa Road 144 Akatarawa Road 148 Akatarawa Road 150 Akatarawa Road	Cluster of over 30 trees comprised of totara, oak, poplar, beech, cabbage tree, spruce, miro kowhai, rimu, juniper, tanekaha, toatoa, cedar, kauri, lime, ash, beech up to approximately 23m located on main <b>road</b> frontage extending into gardens.	LANDSCAPE - Mature, uncommon, unusual or rare exotic specimens and/or indigenous remnants and a large contiguous tree group or part of a wider indigenous forest group and tree group maintains a strong natural form which is well established and integrated within the surrounding landscape  AMENITY - Tree group represents a key characteristic of the urban <b>environment</b> and is regarded as a signature of place
268	7	8 Rata Street	Grove of 2 - 3 trees comprised of totara up to approximately 10m located on <b>property/road boundary</b> .	ECOLOGY - Tree group canopy dominated by remnant tree(s) and naturally occurring associated vegetation which are native to that <b>environment</b> (i.e. early or pre-human)

269	7	6 Rata Street 8 Rata Street	Grove of 2 - 3 trees comprised of oak, kowhai, up to approximately 10m located at back of <b>property</b> bordering reserve.	LANDSCAPE- A large contiguous tree group or part of a wider indigenous forest group
270		6 Rata Street	Cluster of 4 – 6 trees comprised of oak, magnolia, up to approximately 11m located bordering <b>property</b> and stream.	LANDSCAPE- A large contiguous tree group or part of a wider indigenous forest group



## CHARACTER AREA: CRUICKSHANK ROAD

### Cruickshank Road

The Cruickshank Road Character Area is located along the toe of the Southern Hills to the west of the Wairarapa Rail Line.

Throughout this area, **residential units** are typically framed and enclosed by mature native and exotic **boundary** trees. In the late 1800s, this area also accommodated one of the earliest sawmills within the Hutt Valley, however no direct evidence of milling now remains.

The centre of this character area accommodates a steep vegetated **river** scarp which separates residential **properties** with access directly onto Cruickshank Road from rear residential **properties** backing onto the Wairarapa Rail Line.

The eastern edge of this character area continues a strong framework of vegetation along an embankment below the Wairarapa Railway Line. This includes further mature native trees inter-planted with exotic species which continue east of the railway line. Wilding pine consistent with plantation forest established to the east of the railway line have also become established in this area.

Several mature exotic trees also extend along the **road** frontage aligning with Cruickshank Road, however these typically include individual specimens and smaller tree groups separated from the larger more established tree groups established along internal **boundaries**.

### TREE SPECIES

#### Notable Native Trees (including remnants)

Red Beech (*Nothofagus fusca*)

Black Beech (*Fuscospora solandri*)

Totara (*Podocarpus totara*) Kowhai (*Sophora* spp.)

Rimu (*Dacrydium cupressinum*) Kahikatea (*Dacrycarpus dacrydioides*)

Totara (*Podocarpus totara*) Cabbage tree (*Cordyline australis*)

Titoki (*Alectryon excelsus*) Tawa (*Beilschmiedia tawa*)

#### Notable Exotic Species

Oak (*Quercus* spp.) Lime (*Tilia cordata*)

Ash (*Fraxinus* spp.) Copper Beech (*Fagus sylvatica 'Purpurea'*)

Cedar (*Cedrus* spp.) Poplar (*Populus* spp.)

Spruce (*Picea* spp.)

Exotic forestry / wilding tree species

Pine (*Pinus radiata*)

### THREATS



- Indiscriminate pruning / topping
- Removal of diverse under-storey
- Soil compaction within the tree drip line
- Inappropriate siting of **structures** / utilities

#### Character Area Cruickshank Road - Urban Tree Groups

No	Map Ref	Location	Tree Group Description	High Values
271	19 20	27 Cruickshank Road	Cluster of 4 – 6 trees comprised of totara, ash, titoki, tawa, beech up to approximately 29m located on rear <b>boundary</b> .	<p>LANDSCAPE - Mature, uncommon, unusual or rare exotic specimens and/or indigenous remnants and a large contiguous tree group or part of a wider indigenous forest group and tree group maintains a strong natural form which is well established and integrated within the surrounding landscape</p> <p>AMENITY - Tree group represents a key characteristic of the urban <b>environment</b> and is regarded as a signature of place</p> <p>ECOLOGY - Tree group canopy dominated by remnant tree(s) and naturally occurring associated vegetation which are native to that <b>environment</b> (i.e. early or pre-human)</p>
274	19 29	17 Cruickshank Road 25 Cruickshank Road 27 Cruickshank Road 41 Cruickshank Road	Cluster of 16 – 20 trees comprised of beech, ash, totara, spruce up to approximately 16m located at rear of residential <b>properties</b> .	<p>LANDSCAPE - Mature, uncommon, unusual or rare exotic specimens and/or indigenous remnants and a large contiguous tree group or part of a wider indigenous forest group and tree group maintains a strong natural form which is well established and integrated within the surrounding landscape</p> <p>AMENITY - Tree group represents a key characteristic of the urban <b>environment</b> and is regarded as a signature of place</p>
277	20 39 30	27 Cruickshank Road 41 Cruickshank Road 45 Cruickshank Road 59 Cruickshank Road 13 McCarthy Grove 16 McCarthy Grove	Grove of over 30 trees comprised of beech, ash, kahikatea up to approximately 24m located as a band running along the rear of <b>properties</b> , buffer to railway.	<p>LANDSCAPE - Mature, uncommon, unusual or rare exotic specimens and/or indigenous remnants and a large contiguous tree group or part of a wider indigenous forest group</p> <p>AMENITY - Tree group represents a key characteristic of the urban <b>environment</b> and is regarded as a signature of place</p>
279	29	37 Cruickshank Road 45 Cruickshank Road 47 Cruickshank Road 49 Cruickshank Road 51 Cruickshank Road	Cluster of over 30 trees comprised of beech, ash, oak, cedar, totara up to approximately 28m located following steep scarp along internal rear <b>boundary</b> .	<p>LANDSCAPE - Mature, uncommon, unusual or rare exotic specimens and/or indigenous remnants and a large contiguous tree group or part of a wide indigenous forest group and tree group maintains a strong natural form which is well established and integrated within the surrounding landscape</p>

		53 Cruickshank Road 55 Cruickshank Road 57 Cruickshank Road 63 Cruickshank Road 65 Cruickshank Road 67 Cruickshank Road 69 Cruickshank Road 71 Cruickshank Road 89 Cruickshank Road 87 Cruickshank Road 79 Cruickshank Road 41 Cruickshank Road 59 Cruickshank Road 61 Cruickshank Road		AMENITY - Tree group represents a key characteristic of the urban <b>environment</b> and is regarded as a signature of place
283	29	37 Cruickshank Road	Cluster of 4 – 6 trees comprised of ash, oak, kowhai, cabbage tree up to approximately 15m located on <b>road</b> edge.	LANDSCAPE – Tree group maintains a strong natural form which is well established and integrated within the surrounding landscape  AMENITY - Tree group represents a key characteristic of the urban <b>environment</b> and is regarded as a signature of place
284	19	23 Cruickshank Road 27 Cruickshank Road 37 Cruickshank Road 25 Cruickshank Road	Cluster of 11-15 trees comprised of oak, lime, kowhai, ash up to approximately 18m located at front and side of church ground contiguous with notable gum tree.	LANDSCAPE – Tree group maintains a strong natural form which is well established and integrated within the surrounding landscape  AMENITY - Tree group represents a key characteristic of the urban <b>environment</b> and is regarded as a signature of place
285	19	17 Cruickshank Road 19 Cruickshank Road 21 Cruickshank Road 25 Cruickshank Road	Cluster of 2 – 3 trees comprised of totara, cabbage tree up to approximately 15m located in rear garden.	LANDSCAPE – Tree group maintains a strong natural form which is well established and integrated within the surrounding landscape  AMENITY - Tree group represents a key characteristic of the urban <b>environment</b> and is regarded as a signature of place

## CHARACTER AREA: SEYMOUR GROVE

### Seymour Grove

The Seymour Grove Character Area is located within Kinglsey Heights along the lower part of a spur which extends from the ridge-line of the Southern Hills to the north towards the Hutt Valley.

Residential development was established in the 1980s in association with low level vegetation along the **road** frontage with larger areas of native vegetation established to the rear of the **properties** within gullies and less accessible steep terrain. This includes an area of semimature native vegetation to the north of this character area which retains a strong vegetation framework and backdrop to built development.

Internal native vegetation is visible from a walkway which connects Seymour Grove with King Charles Drive and as part of a contained backdrop from adjoining **roads**.

### TREE SPECIES

#### Notable Native Trees

Red Beech (*Nothofagus fusca*)

Black Beech (*Fuscopora solandri*)

Rimu (*Dacrydium cupressinum*) Totara (*Podocarpus totara*)

Rewarewa (*Knightia excelsa*) Kowhai (*Sophora* spp.)

Kamahi (*Weinmannia racemosa*) Pate (*Schefflera digitata*)

Pittosporum (*Pittosporum* spp.)

### THREATS

- Indiscriminate pruning / topping
- Removal of diverse under-storey
- Soil compaction within the tree drip line
- Inappropriate siting of **structures** / utilities
- Damage from pest plants or animals



### Character Area Seymour Grove - Urban Tree Groups

No	Map Ref	Location	Tree Group Description	High Values
288	28	16 King Charles Drive 18 King Charles Drive 20 King Charles Drive 4 Seymour Grove	Grove of 11 - 15 trees comprised of beech up to approximately 8m located on scarp in rear garden.	<p>LANDSCAPE – Tree group maintains a strong natural form which is well established and integrated within the surrounding landscape</p> <p>AMENITY - Tree group represents a key characteristic of the urban <b>environment</b> and is regarded as a signature of place</p>

374	28	6 King Charles Drive 8 King Charles Drive	Cluster of trees comprised of rimu, totara, pate up to approximately 9m located as a part of scarp backdrop.	<p>AMENITY - Tree group represents a key characteristic of the urban <b>environment</b> and is regarded as a signature of place</p> <p>ECOLOGY - Tree group canopy dominated by remnant tree(s) and naturally occurring associated vegetation which are native to that <b>environment</b> (i.e. early or pre-human)</p>
-----	----	--	--	---